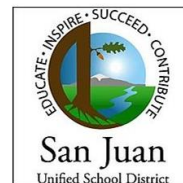




Arcade-Cripple Creek Trail



SMUD®

Sacramento Municipal
Utility District

Sunrise
RECREATION & PARK DISTRICT

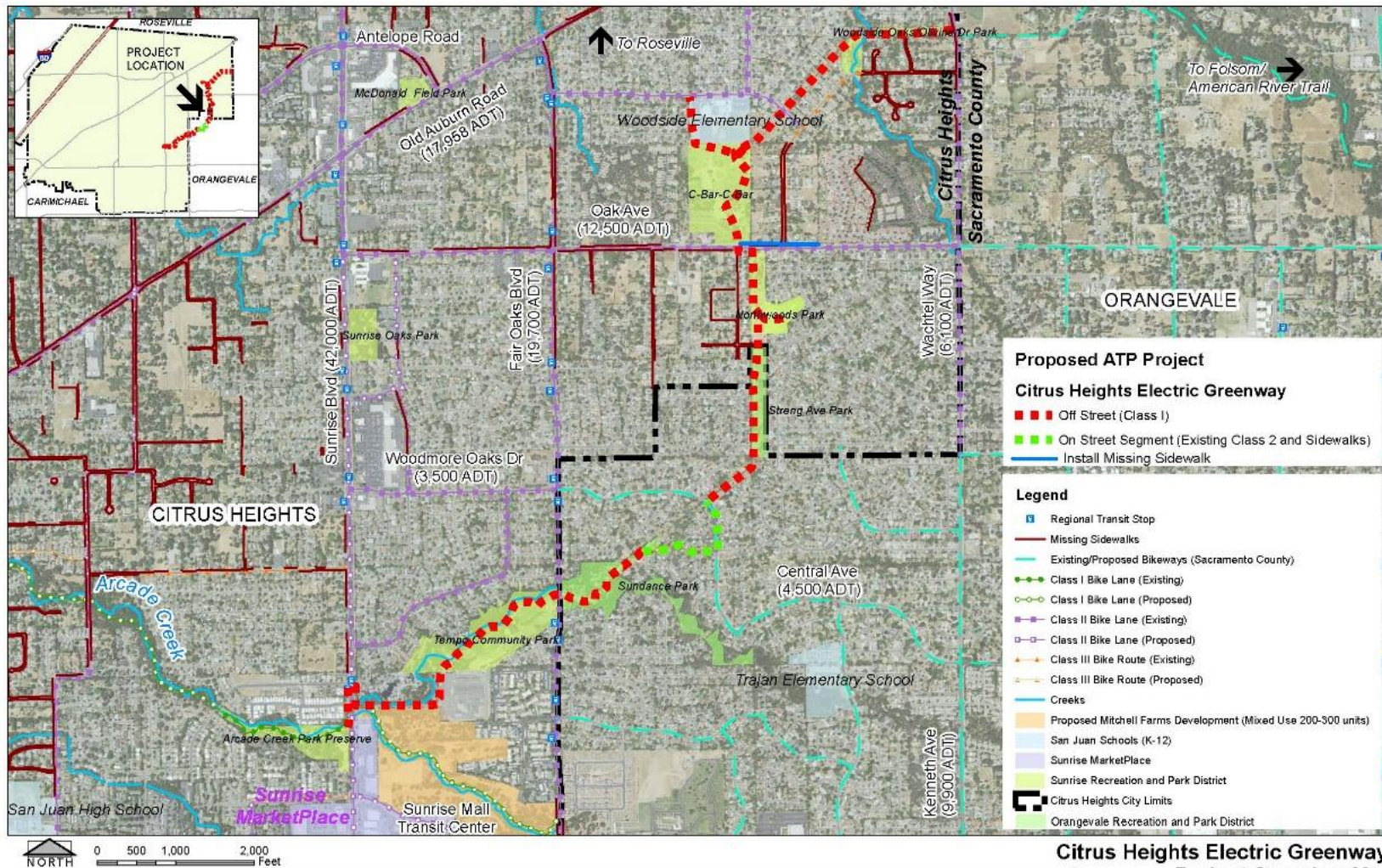
SACRAMENTO
COUNTY...



Agenda

- Overview
- History/Context
- Current Project Status
- Next Steps

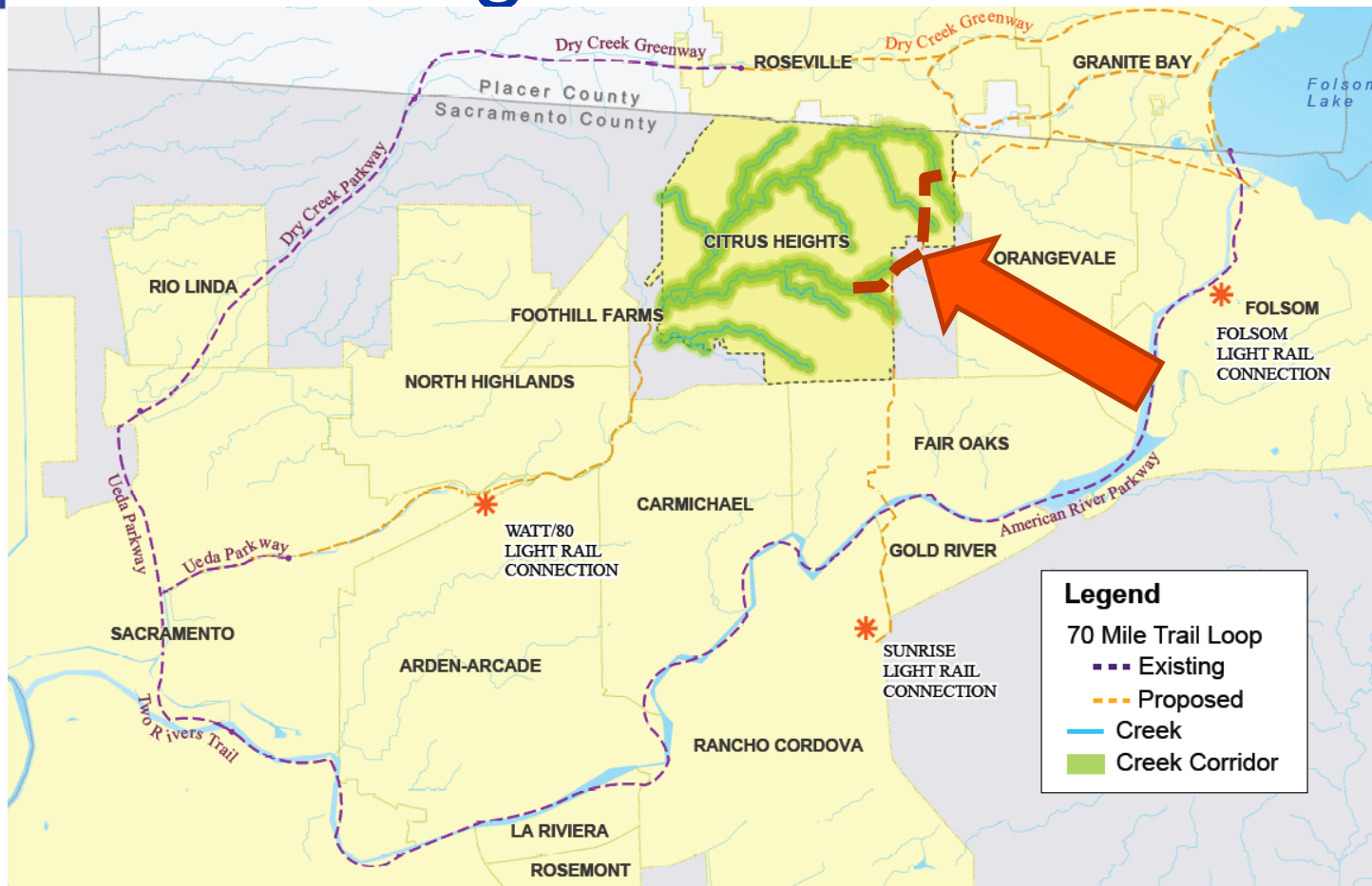




Citrus Heights Electric Greenway Project Overview Map



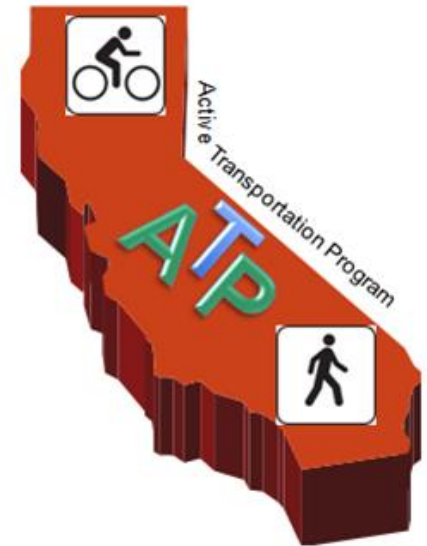
Regional Context





Background

- Active Transportation Program
 - Grant Managed by CalTrans
 - Provides funding for projects that increase
 - Biking
 - Walking
 - Alternative Transportation
 - Over 450 applications (2016)
 - Requesting nearly \$1-billion
 - Funded about \$350-million





Arcade-Cripple Creek Trail

- Awarded \$6.2 Million
- 2.9 Mile Multi-Use Trail
- 10' paved w/ 2-2' shoulders
- Connects:
 - 8 Parks
 - Sunrise MarketPlace
 - Woodside K-8 School
- Partnership with:
 - San Juan Unified School District
 - Sunrise Recreation and Park District
 - Orangevale Recreation and Park District
 - Sacramento County
 - SMUD

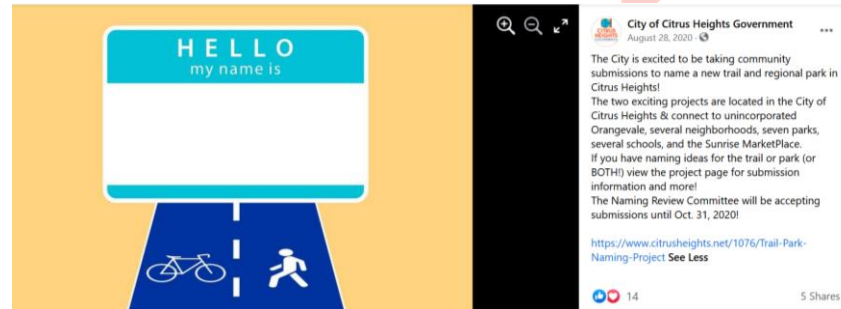
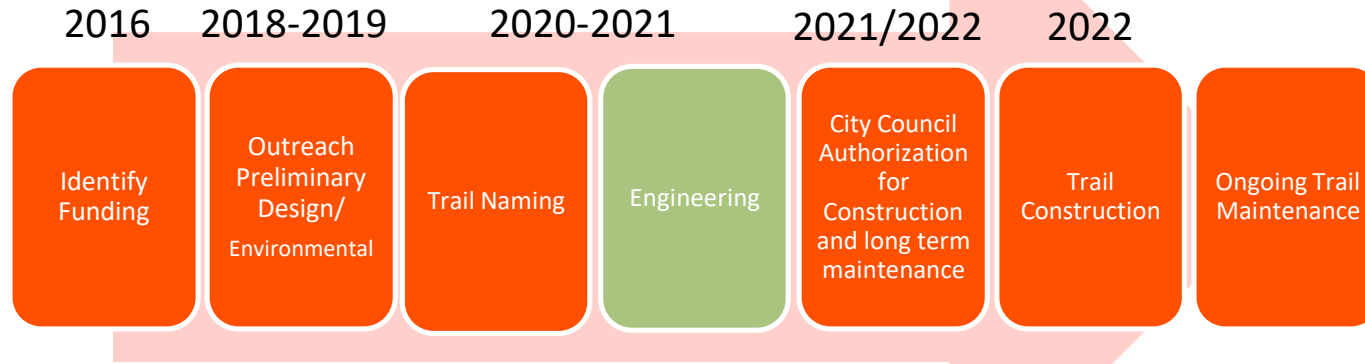


Trail Concept





Trail Development Process





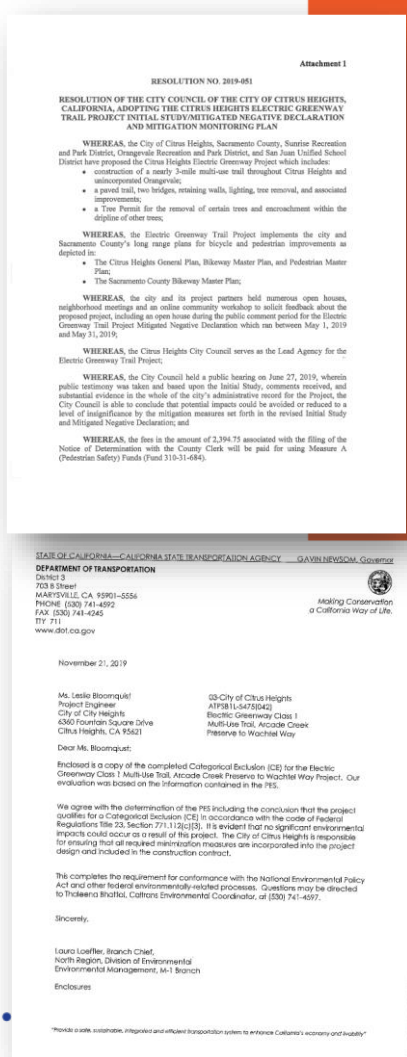
CEQA and NEPA

- CEQA - Mitigated Negative Declaration
 - Adopted June 27, 2019

- Intent:

- Identify Potential Environmental Impacts
- Mitigate any Potential Impacts to Less than Significant Levels
- Include Mitigation Measures to protect environment during construction

- NEPA Categorical Exclusion





Mitigation Measures

- Biological (6 Measures)
 - Sensitive Plants
 - Sensitive Animals
 - Protected Trees
 - Regulatory Permits
 - Erosion Control
- Traffic
 - Ensure Safe Construction and Circulation
- Air Quality
 - Protect Air Quality during construction
- Cultural
 - Stop work if cultural materials discovered
- Hydrology
 - Prevent flooding thru engineering design
- Hazards
 - Prevent pollution during construction



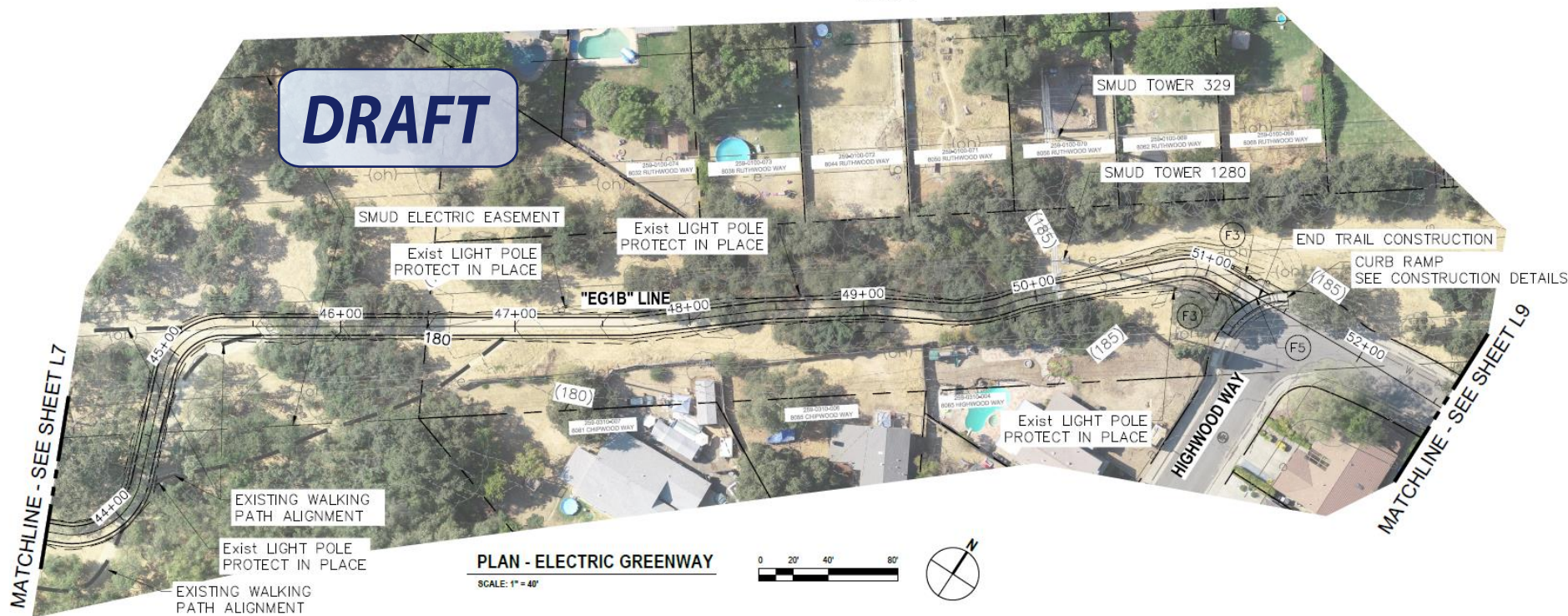


Preliminary Design



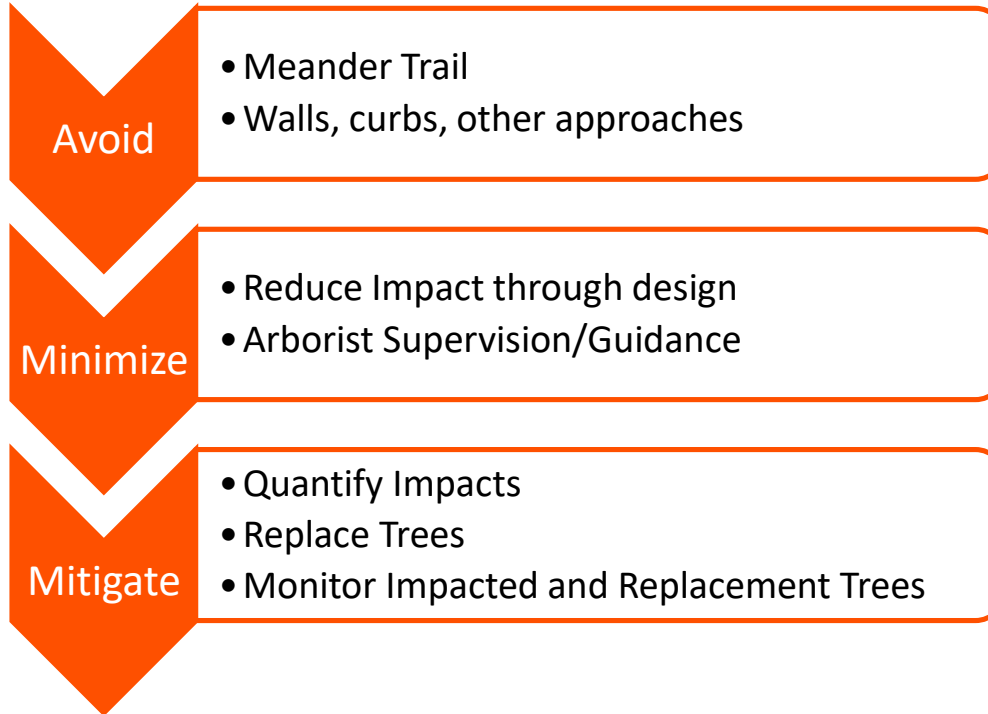


Preliminary Design





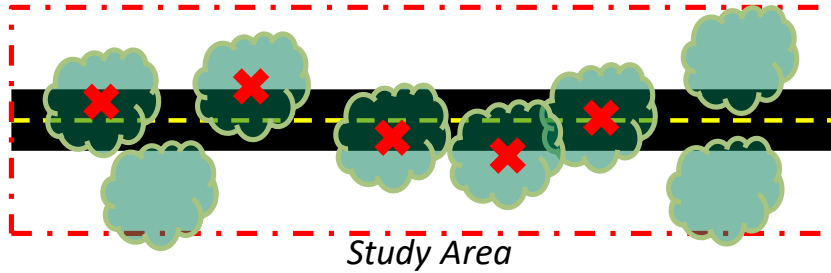
Tree Impact Hierarchy



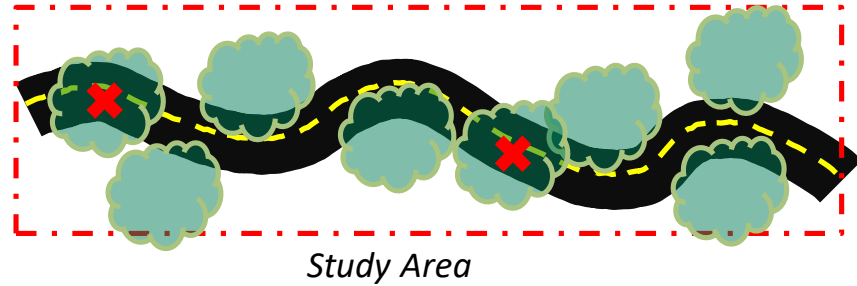


Trail Impact on Trees (Avoidance)

MND Assumes Worst Case



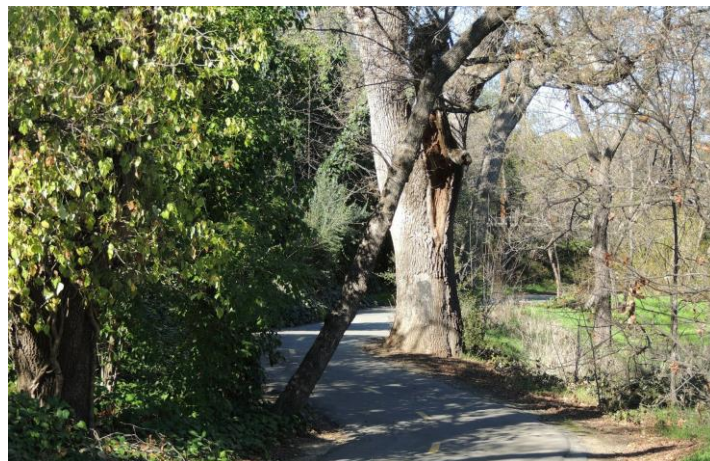
Final Design in Practice





Trail Impact on Trees

- MND based on preliminary engineering
 - MND considers worst case scenario for tree impacts
- Final Design will avoid tree removal as much as feasible
 - Meander Trail
 - Retaining Walls
 - Reduce shoulder/trail width
- Trees removed require mitigation





Tree Protection During Construction

- Contractor installs Tree Protection Fencing
- Arborist monitors all work within protected zone of trees





Final Engineering





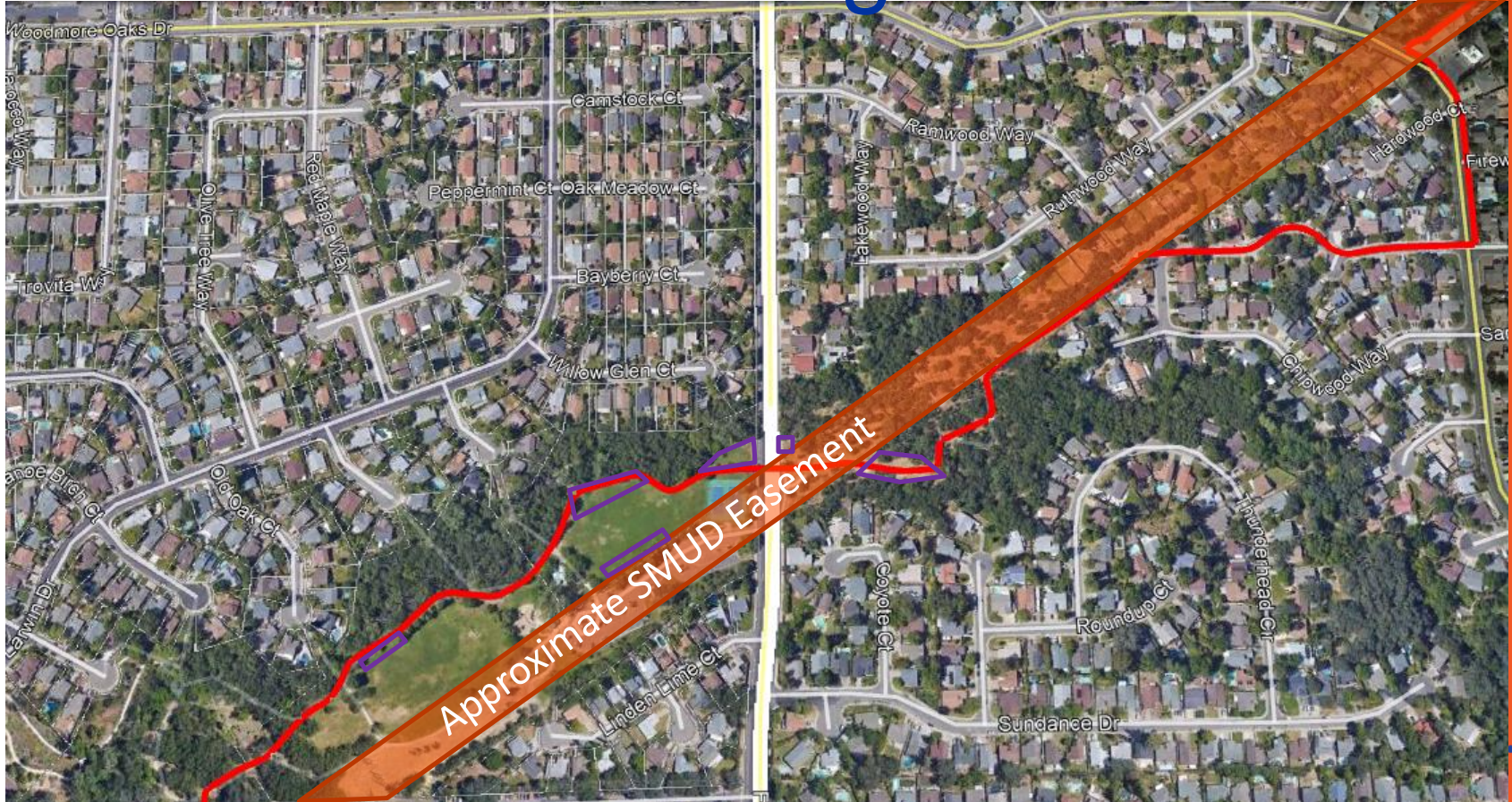
Tree Mitigation

- Identify Mitigation Requirement Based on 100% Plans
- Municipal Code and MMRP
 - Replant Trees:
 - One 15 gallon Tree = 1" of removal
 - 3-year establishment/performance period





Tree Mitigation





Bridge Design Requirements

- ADA
 - Slope
 - Surface
 - Rails
- Caltrans/FHWA
 - Pass the 2% flood or the flood of record, whichever is greater, with adequate freeboard to pass anticipated drift
- Sacramento County
 - 100 Year Flood +1 foot of freeboard
- CEQA Standard
 - Cut and fill volumes in the 100-year floodplain are balanced
 - No overall increase in the base flood elevation
- FEMA
(Title 44, Section 60.3(d)(3))
 - FEMA standards are employed for design, construction, and regulation to reduce flood loss and to protect resources

Citrus Heights Electric Greenway Project
Sacramento County, California

Bridge Design Hydraulic Study Report



Prepared for:
**CITRUS
HEIGHTS**
Solid roots. New growth.

Prepared by:
WRBCO

August 2020

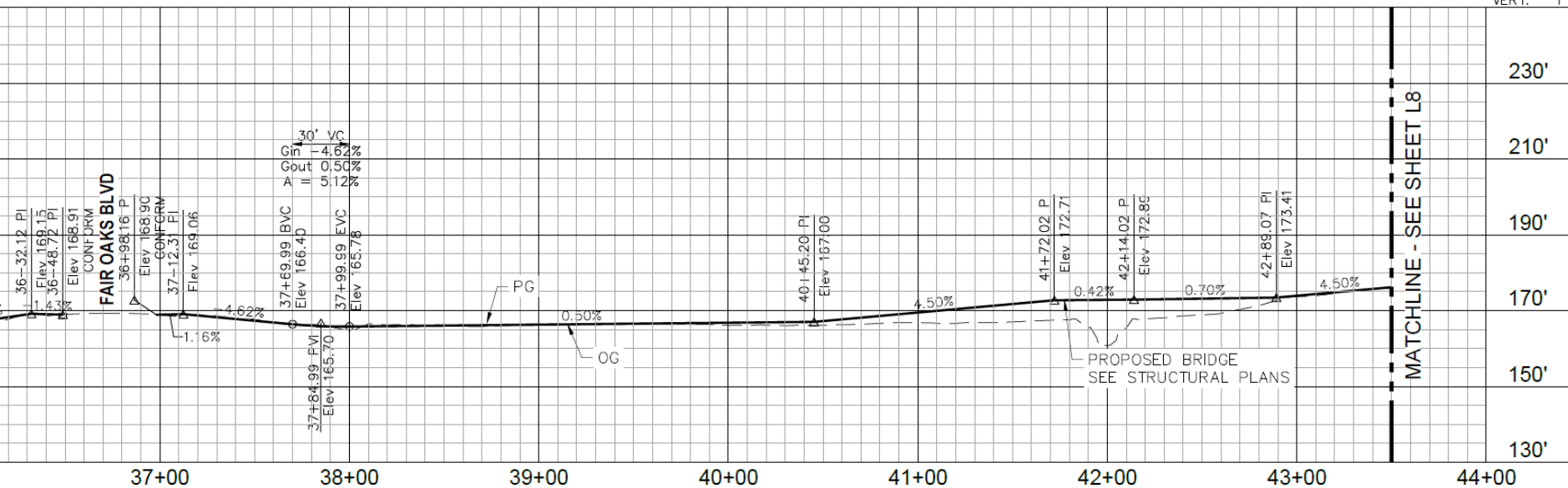




Bridge and Flooding

PROFILE

SCALE: HORIZ. 1"=40'
VERT. 1"=20'





Next Steps

- Complete 100% Design
 - Community Comments/Public Review
- Complete Final Tree Impact Assessment
- Prepare Tree Mitigation Plan
- Prepare Bid Package
- Bid Project
- Award Construction Contract
- Community Tree Mitigation Event





More information

- <http://www.citrusheights.net/940/Arcade-Cripple-Creek-Trail-Project>
- Email: Electricgreenway@citrusheights.net



Questions?

