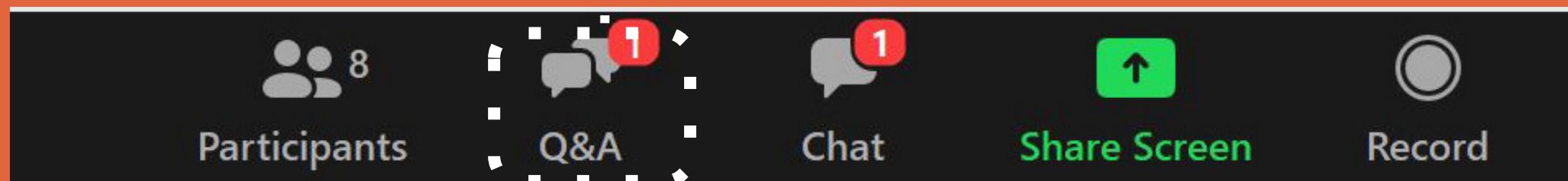


WELCOME TO THE WEBINAR

This is a Zoom Webinar.

Questions are encouraged! Please submit through the Q&A icon at the bottom of your screen



This webinar is being recorded and archived and will be posted on the MMTSP webpage at www.citrusheights.net/945

We will also provide a link via the City's Facebook page.
A quick poll while we wait for everyone to log in and join us!

We are making Citrus Heights safer together!



Multi Modal Transportation Safety Program (MMTSP) Workshop 3

We are making Citrus Heights safer together!



Agenda



1. Meet our speakers
2. MMTSP overview
3. How did we get to this point?
4. Unboxing the tool
5. Using the MMTSP tool
6. Using the toolbox
7. Next steps
8. Questions & Answers

Meet our Speakers



Leslie Blomquist
City of Citrus Heights
City Engineer



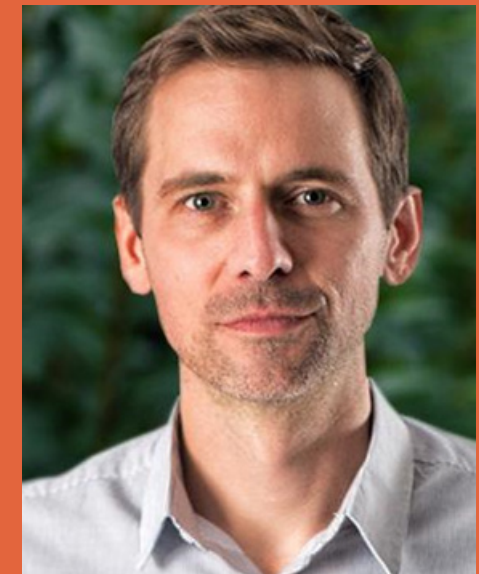
Mary Poole
City of Citrus Heights
Operations Manager



Iain Conway
Steer
Project Manager



Sarah McMinimy
Steer
Community Engagement



Adam Vest
Toole Design
Prioritization & Safety



Nichole Baxter
City of Citrus Heights
Communications
Officer

Moderator:



MMTSP OVERVIEW

Background

The General Services Department (GSD) regularly receives requests for new signs, striping, crosswalks, speed humps, traffic calming and traffic enforcement.

The Multi Modal Transportation Safety Program (MMTSP) will develop guidelines and procedures to initiate and evaluate requests.

The MMTSP will improve the way the city addresses traffic and safety concerns, and provide an update to the 2001 Neighborhood Traffic Calming Program .

Result

A process that allows the city to quickly respond to citizen requests, identify solutions and prioritize implementation.

Program Goals

- Identify safety patterns, trends and “hot spots” and appropriate solutions
- Engage the community
- Develop prioritization methodology and tool
- Evaluate and prioritize past resident concerns and requests.
- Identify potential funding sources for implementing solutions.
- Provide a “toolbox” and program guidelines for the community

Thank you to our Neighborhood Champions!



Chad Singleton
Aimee Pfaff
Susan Pointer
Melanie Steffens

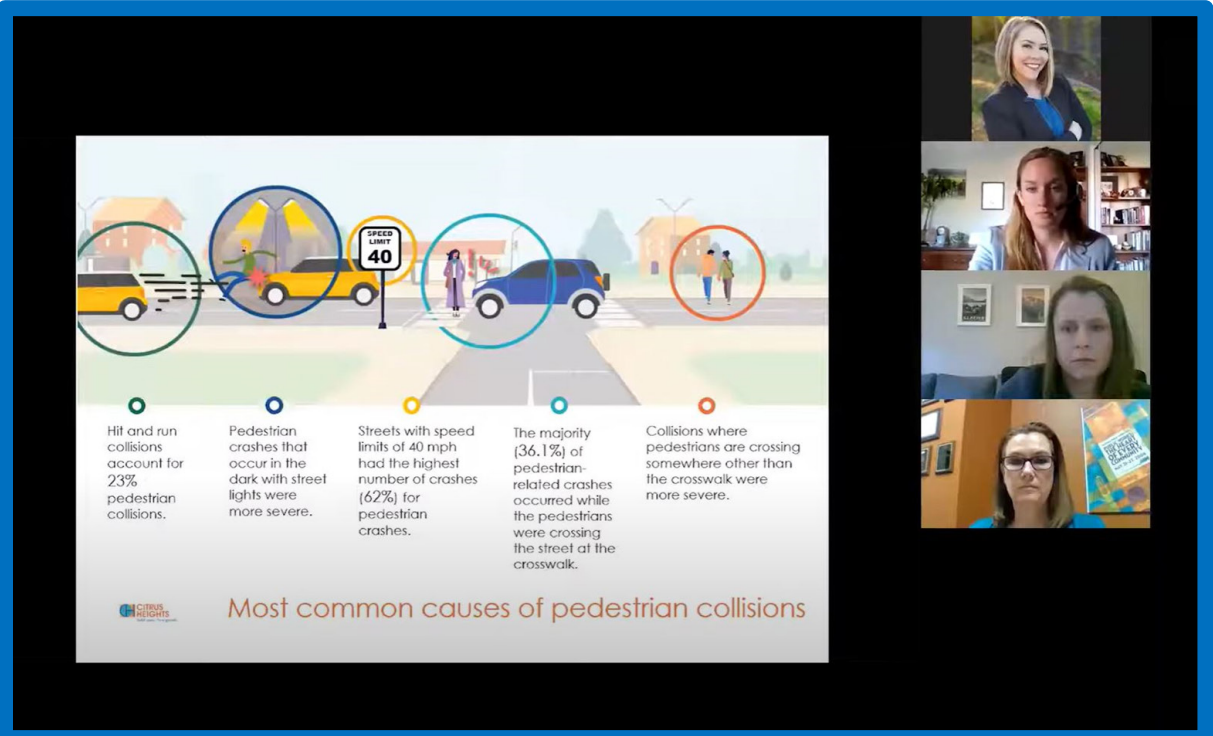


And thank you to all of you – who are continually working in the community to champion safety – for all modes – within our neighborhoods.

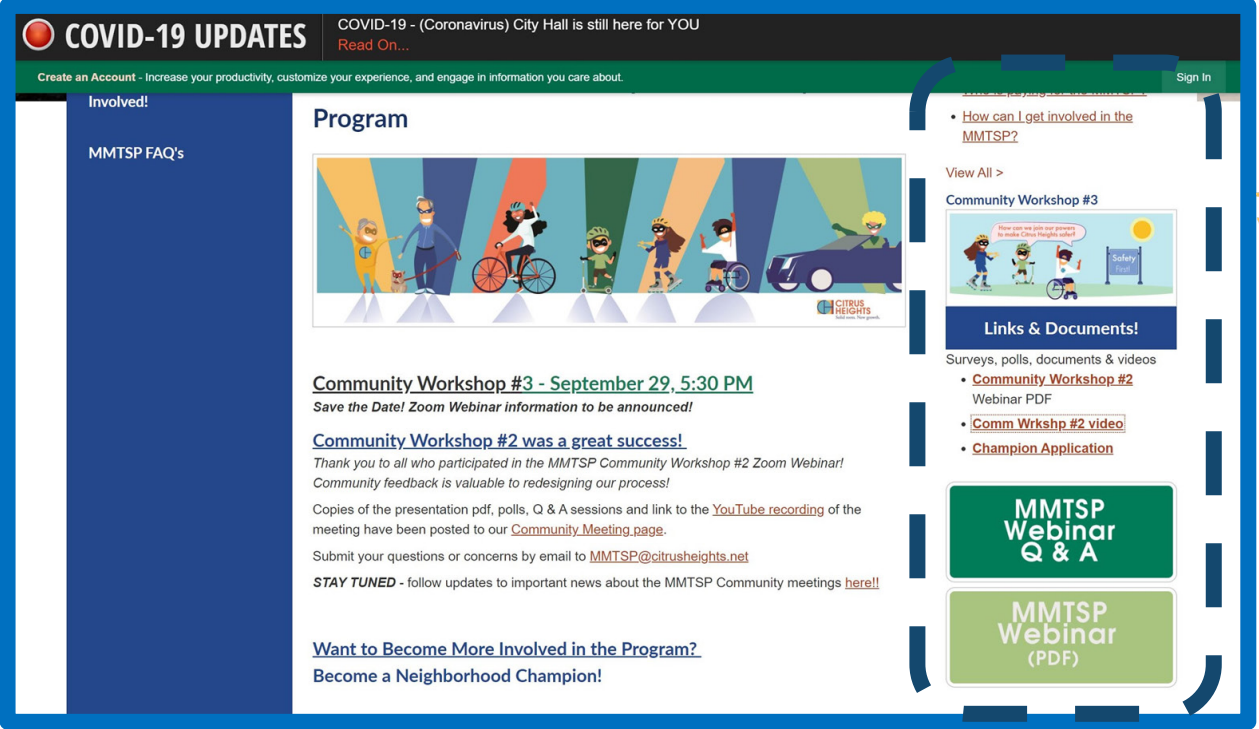
How did we get to this point?



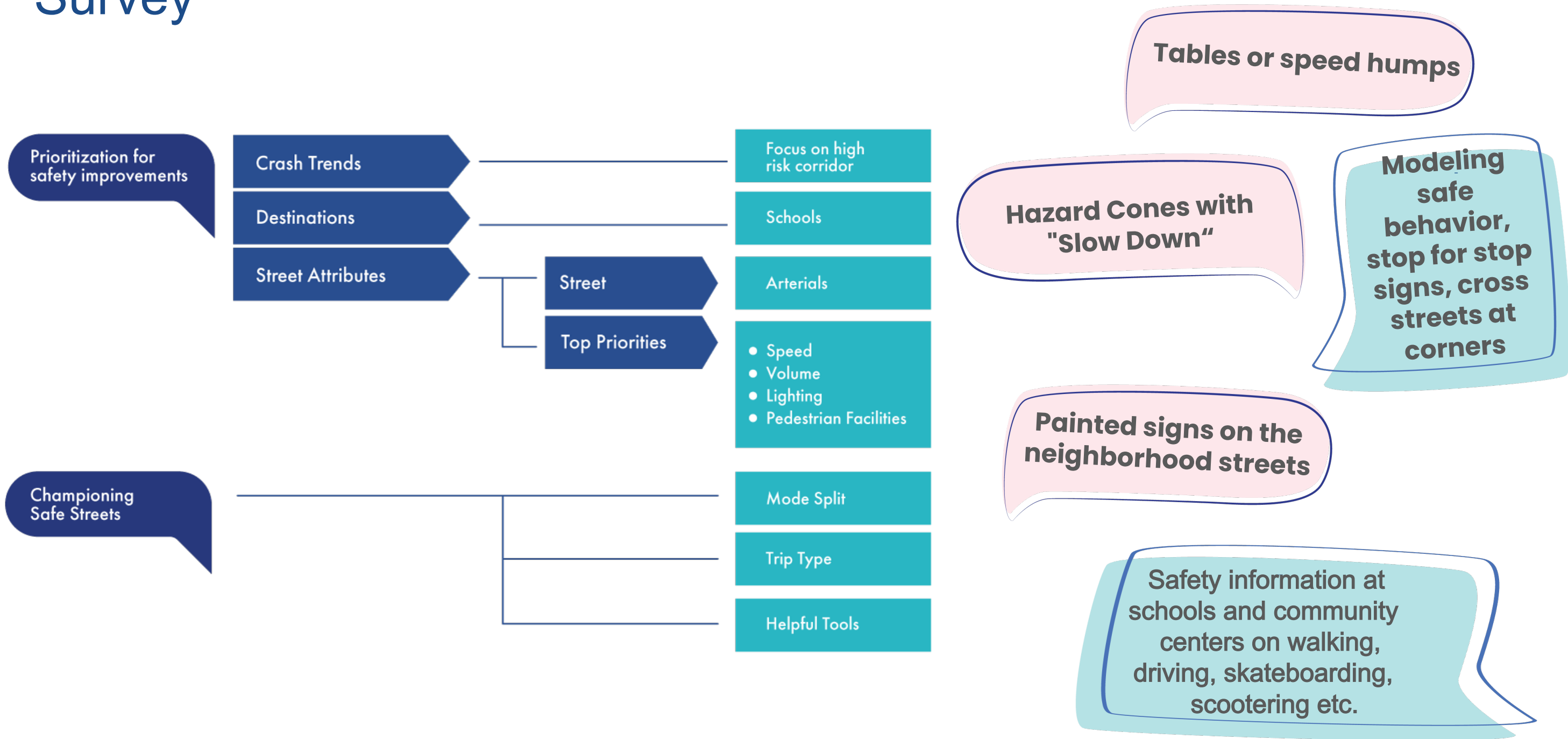
Previous Workshops



Workshop #2 presentation and Q&As available online at citrusheights.net! Psst...this is where you can access the tool too!



The MMTSP Survey



UNBOXING THE TOOL!

The **MMTSP**
is for **LOCAL
STREETS!**



1. MMTSP Tool

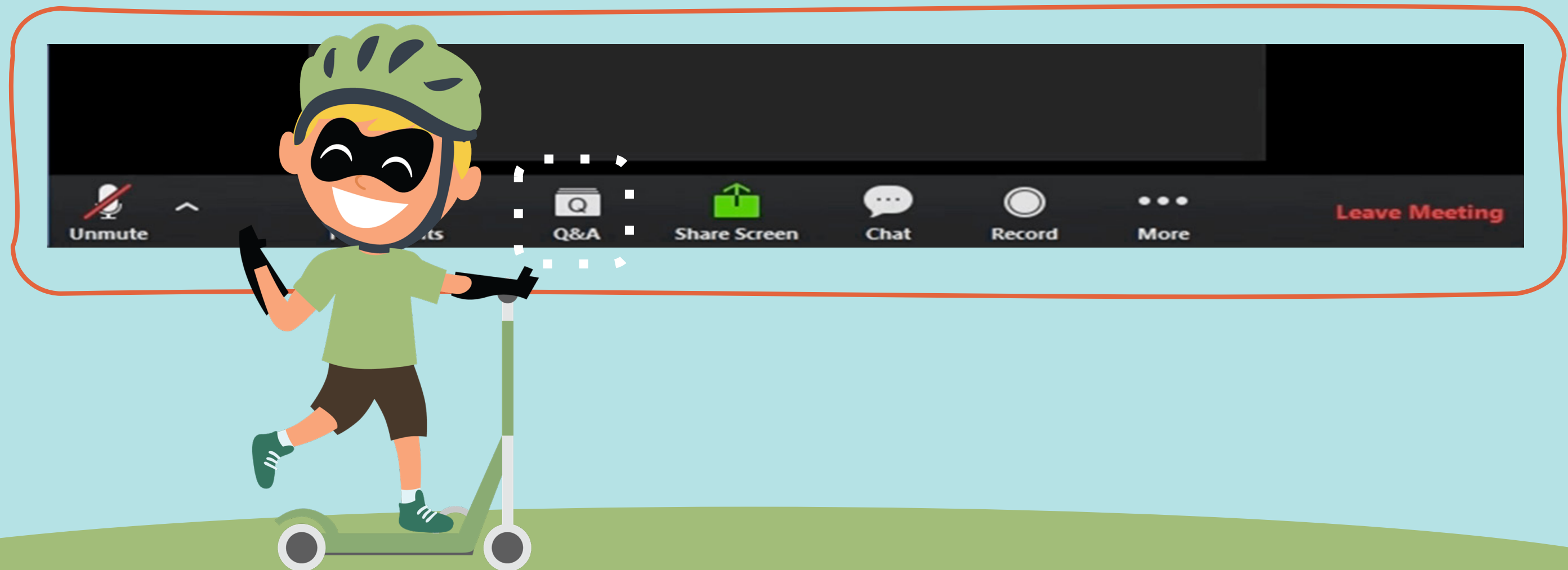
1. Overview
2. Prioritization factors
3. Map of requests

2. Using the MMTSP Tool

1. Submitting a request
2. Using the toolkit

3. Questions & Answers

Reminder to submit your questions through the Q&A icon on the bottom of your screen



MMTSP Tool

Two - step Process



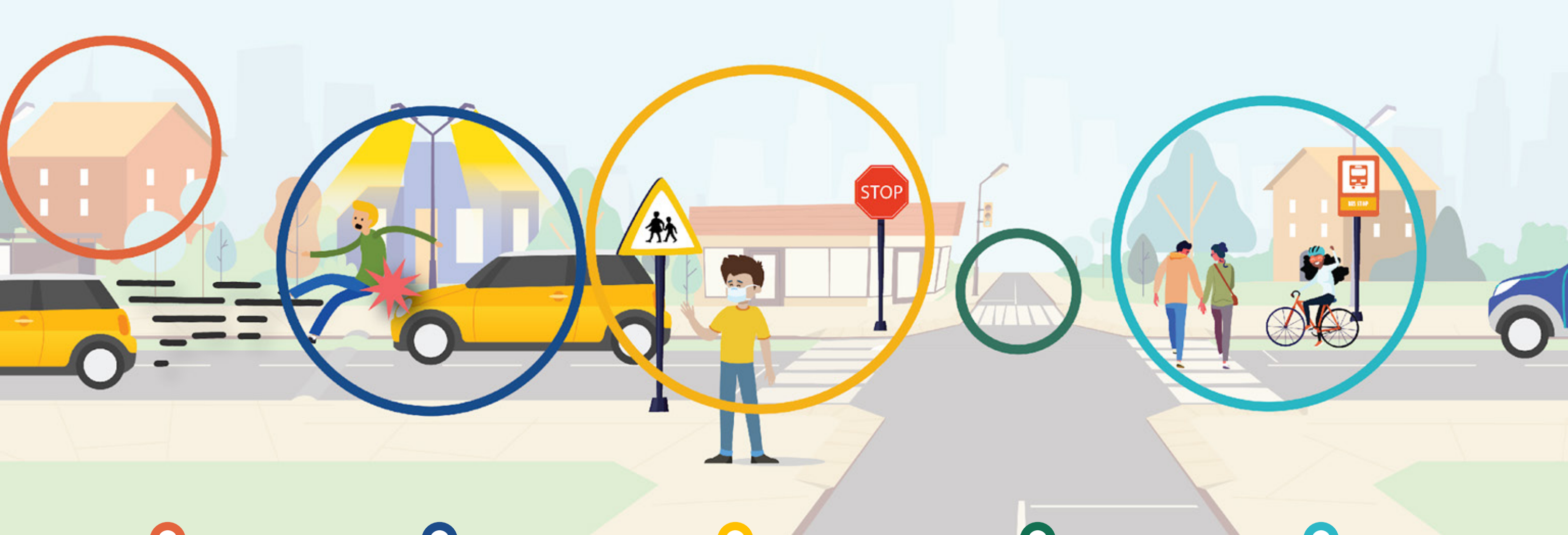
1. Prioritization : document and score resident requests

- Contextual factors
- Weighting of factors
- Prioritization Score
- Online map with results and data



2. Evaluation : Detailed engineering assessment

- Collect data
- Conduct site - specific analysis
- Determine need
- Identify countermeasure
- Look for funding opportunities



- Community Center/ Services
- Senior Center/ Housing

- Lighting Presence
- Crash History
- Proximity to existing traffic safety countermeasure

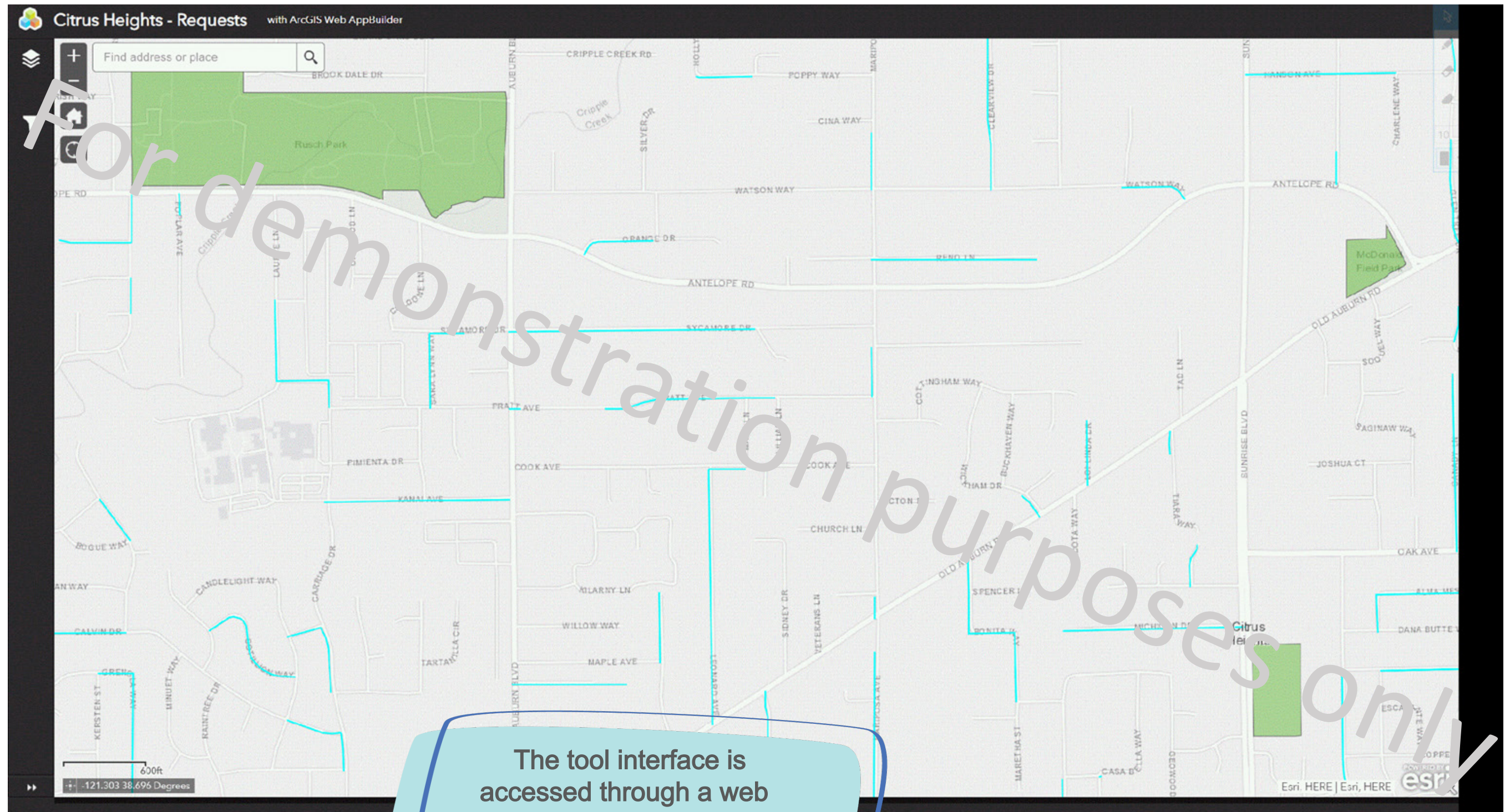
- Schools
- Community Requests
- Commercial/ Retail

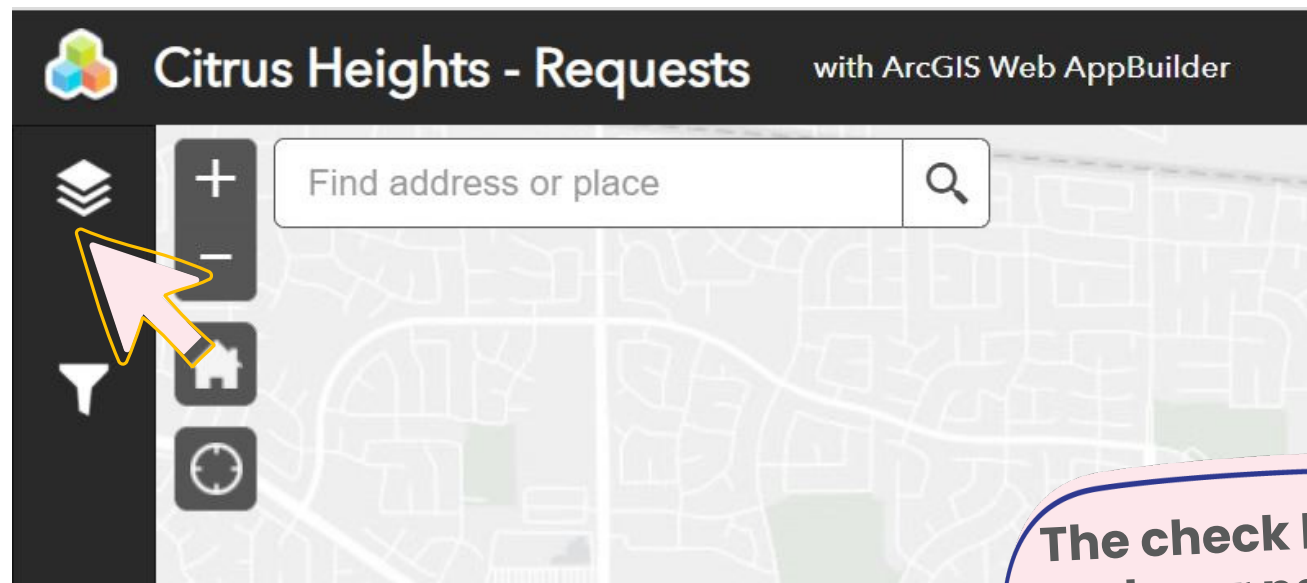
- Sidewalk Presence
- Functional Classification

- Bike Network
- Transit Stops
- Equity
- Funded City Plans

Prioritization Factors

MMTSP Tool






The check boxes next to layer names turn that layer's data on and off.

- Standard map controls are included as well

Search for an address

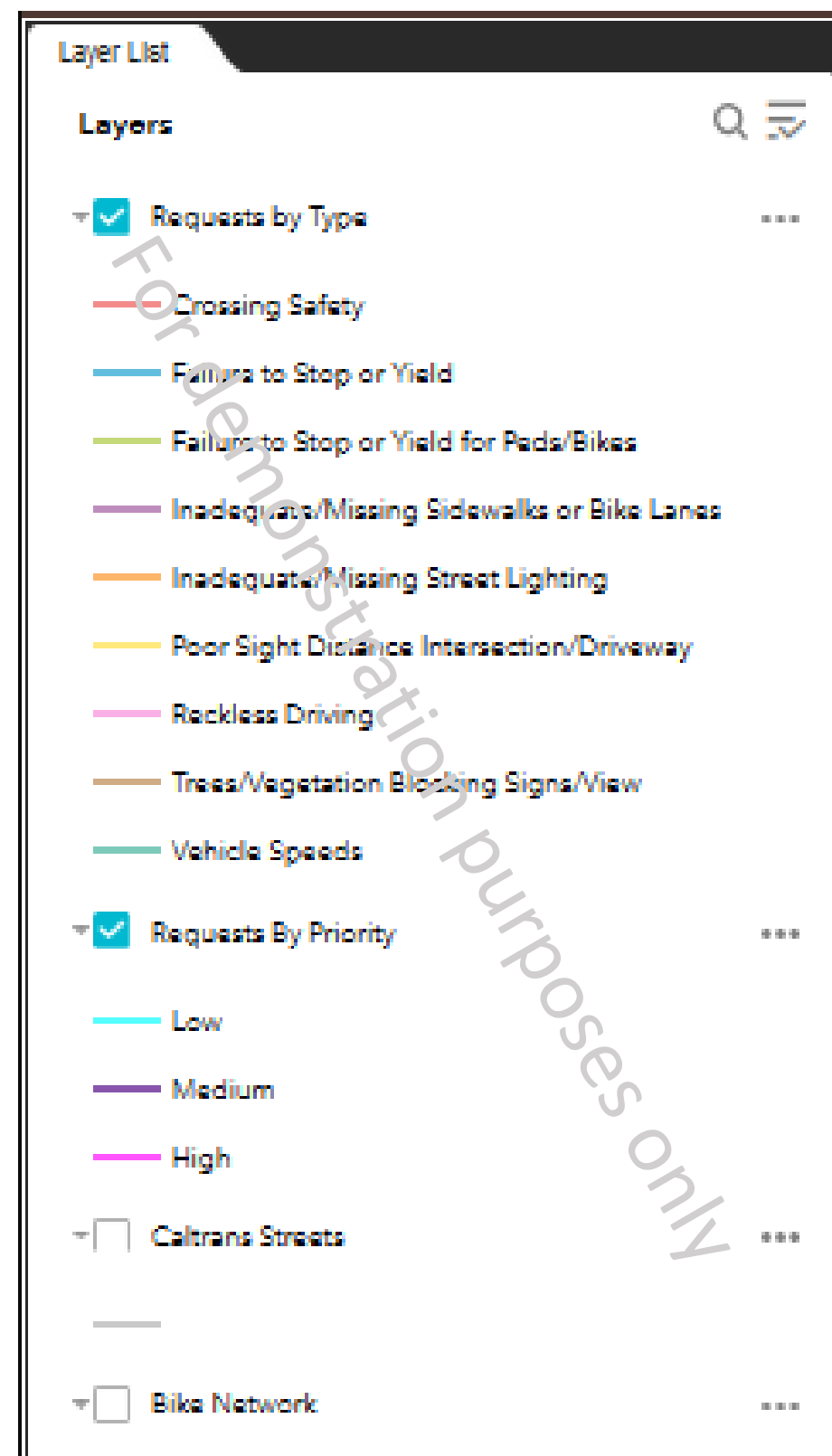
 Change the zoom

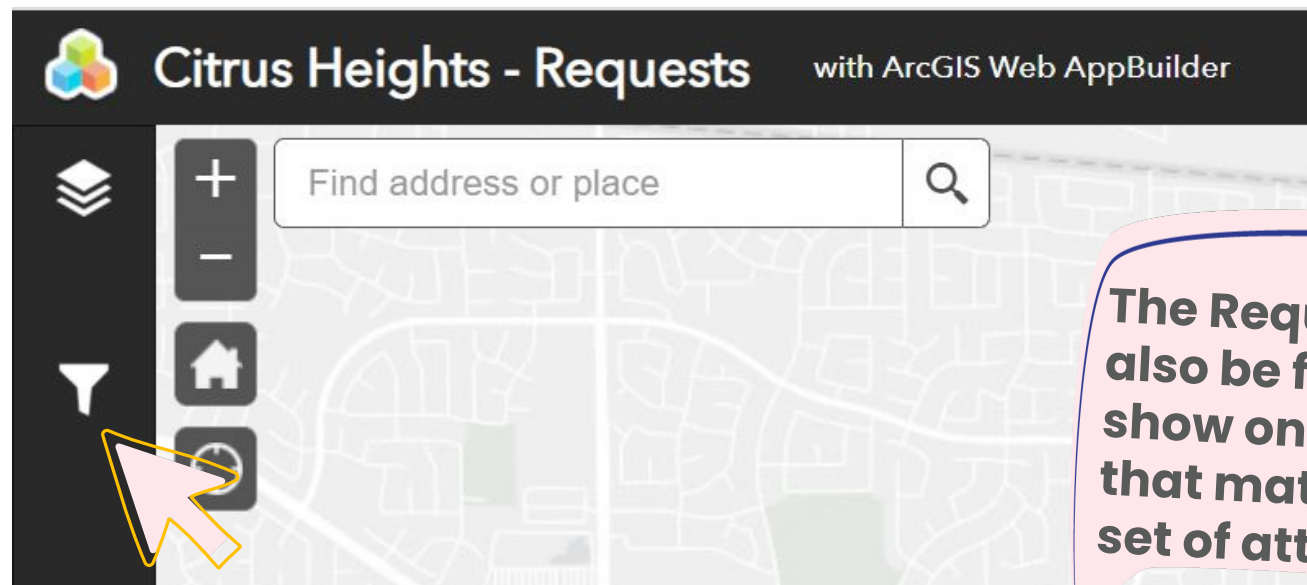
 Reset the view.

- Click on  to open the layer list where you can toggle between different types of requests.



List of layers





The Request layer can also be filtered to show only requests that match a certain set of attributes.

Click on  to filter layers based on their year, priority and request type.



List of layer filters

Filter

- ☒ Requests By Year

Year is any of

0 selected
- ☒ Requests by Priority

Priority Bucket is any of

0 selected
- ☒ Request Types

Request Type is any of

0 selected

- ☐ Crossing Safety
 - ☐ Failure to Stop or Yield
 - ☐ Failure to Stop or Yield for Peds/Bikes
 - ☐ Inadequate/Missing Sidewalks or Bike Lanes
 - ☐ Inadequate/Missing Street Lighting
 - ☐ Poor Sight Distance Intersection/Driveway
 - ☐ Reckless Driving
 - ☐ Trees/Vegetation Blocking Signs/View

QUESTIONS ABOUT THE MMTSP TOOL



Using the MMTSP Tool

We are making Citrus Heights safer together!



Submitting a Request

Overview

- Form will be available in multiple ways- digital and hard copies
- Will need to submit information on:
 - Your contact information
 - Location of issue
 - Nature of issue (ie. speed, failure to yield etc.)
 - Any other comments, description or supporting information

 **City of Citrus Heights
Traffic Calming Request Form**

Contact Information

First Name
Last Name
Home Address
Apartment Number
City
State
Zip Code
Phone Number
Email

Traffic Calming Request



Issue(s) Observed:

- ☐ Vehicle Speeds
- ☐ Crossing Safety
- ☐ Reckless Driving (e.g. "donuts", passing in bike/parking lane, etc.)
- ☐ Failure to Stop or Yield at Stop/Yield Signs
- ☐ Poor sight distance at intersection/driveways
- ☐ Failure to stop or yield for peds/bikes
- ☐ Inadequate/missing street lighting
- ☐ Inadequate/missing sidewalks or bike lanes
- ☐ Trees/vegetation blocking signs/view

Other Comments:





All the requests will be categorized under one or more of these categories.

- ☐ Vehicle speeds
- ☐ Crossing safety
- ☐ Reckless driving (e.g. "donuts", passing in bike/parking lane, etc.)
- ☐ Failure to stop or yield at stop/yield signs
- ☐ Poor sight distance at intersection/driveways
- ☐ Failure to stop or yield for peds/bikes
- ☐ Inadequate/missing street lighting
- ☐ Inadequate/missing sidewalks or bike lanes
- ☐ Trees/vegetation blocking signs/view
- ☐ Cut-through traffic
- ☐ Do you have any more suggested categories?

Which ones are you most concerned about in your neighborhood? Take the poll!

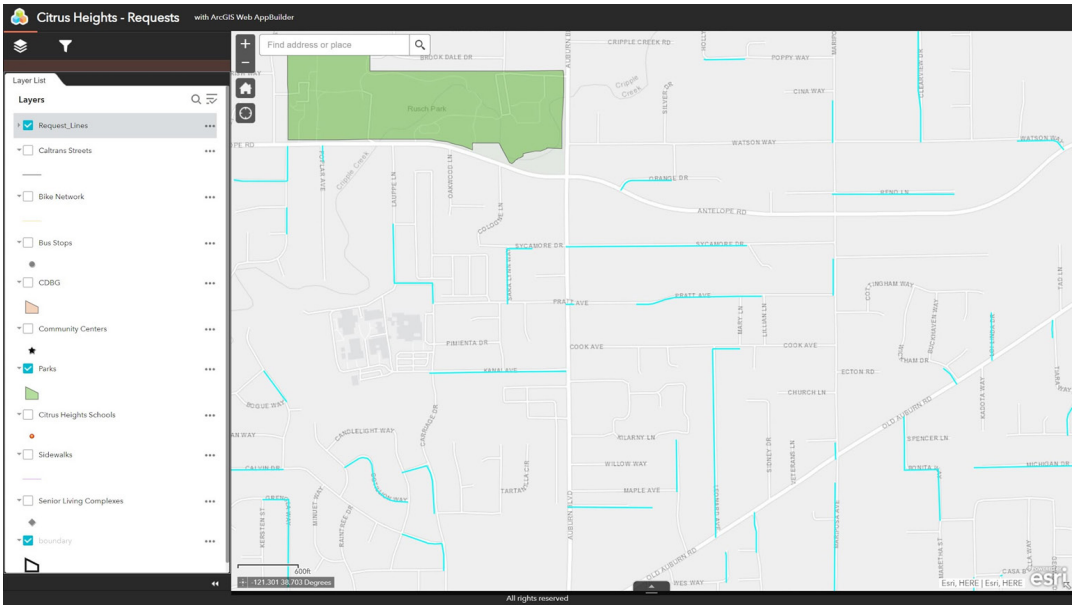
Email additional suggestions to MMTSP@citrusheights.net



‘Issues observed’ categories

The MMTSP is a...

Comprehensive Program!



Tool & Interactive Map



Community Toolkit



Guide



RAISED CROSSWALKS

A raised crosswalk is a speed hump, allowing people to cross the street at the same level as the sidewalk while resulting in drivers slowing down when going over it.

STRIPING, SIGNING AND PAVEMENT LEGENDS

The use of edge lines, centerlines, bike lanes and parking lanes are cost effective ways of narrowing the roadway lanes, resulting in drivers slowing down.

Using the Toolbox



The MMTSP Toolbox gives you the tools to champion street safety on your street or in your neighborhood!



MMTSP Guide

Countermeasures are physical treatments as well as non-physical strategies that address traffic safety concerns.

Physical Treatment Examples:

- Speed Humps
- Signage

Non - Physical Strategy Examples:

- Community Involvement



Next Steps

Winter
2020/21

- Finalize tool and map of requests
- Go to City Council for adoption

Spring
2021

- Public launch of MMSTP Tool, Interactive Map and MMTSP Guide
- Submit requests on Citrus Heights Website

Questions & Answers

How can we join our powers to make Citrus Heights safer?



Thank you for participating!
Please stay engaged!

www.citrusheights.net/945

MMTSP@citrusheights.net








CONTACT US

6360 Fountain Square Drive
Citrus Heights, CA 95621

Phone: 916-725-2448
TTY/DD: CA Relay Service 7-1-1
Fax: 916-725-5799

SOCIAL MEDIA

-  Facebook
-  Twitter
-  YouTube
-  NextDoor
-  Sign up for News

We are making Citrus Heights safer together!



COUNTERMEASURES

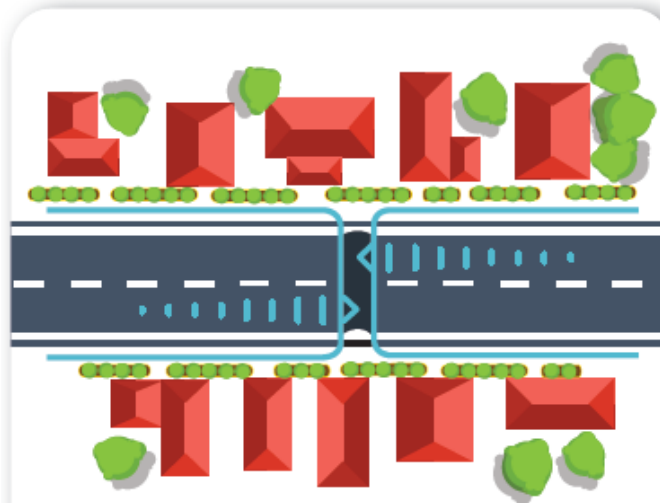


Countermeasures are infrastructure-oriented safety treatments and strategies, chosen based on proven effectiveness and benefits, which are designed to counteract a threat to street safety.



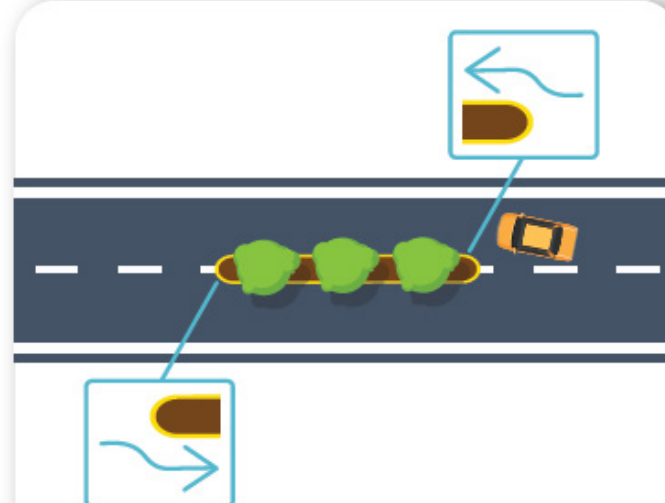
CURB EXTENSIONS

Curb extensions shorten the distance to cross the street, making it easier for drivers to see pedestrians and resulting in drivers slowing down when turning.



SPEED HUMPS

Speed Humps add a raised element on the road, resulting in drivers slowing down when going over it.



MEDIAN ISLAND

Raised median islands between travel lanes are designed with breaks for landscaping and space for pedestrians to wait while crossing the street.



GATEWAY

Gateway features are a visual cue for motorists intended to mark the transition to a slower speed street. Special entrance treatments use a combination of physical, landscaping, urban design, and pavement textural changes.

COUNTERMEASURES

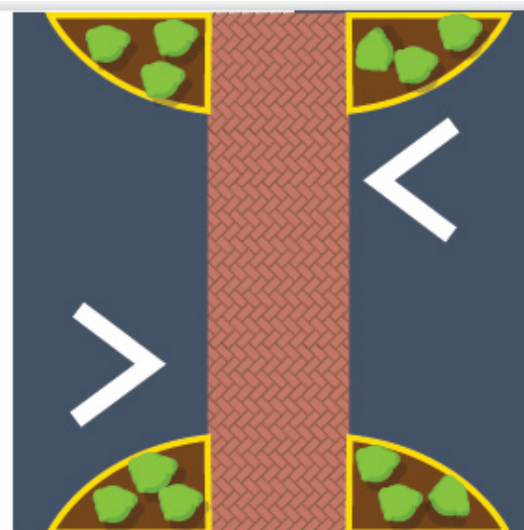


Countermeasures are infrastructure-oriented safety treatments and strategies, chosen based on proven effectiveness and benefits, which are designed to counteract a threat to street safety.



CHICANES

A chicane is a series of alternating curb extensions (or on-street parking spaces) that creates an S-shaped roadway, resulting in drivers slowing down.



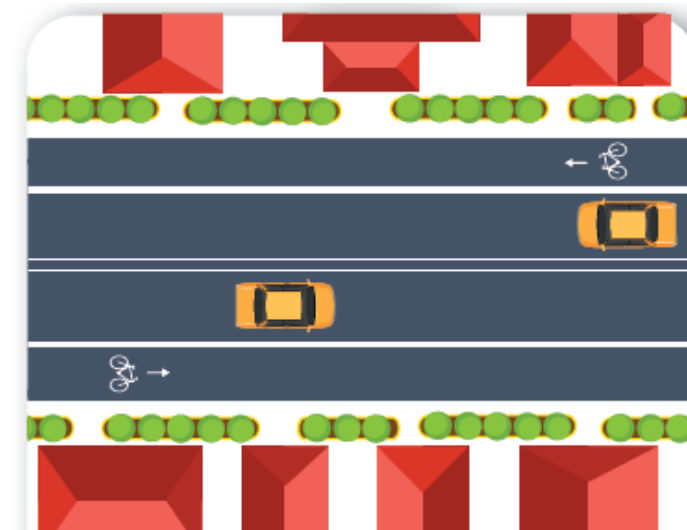
RAISED CROSSWALKS

A raised crosswalk is a speed hump, allowing people to cross the street at the same level as the sidewalk while resulting in drivers slowing down when going over it.



ROUNABOUTS

A roundabout is a circular intersection on a major street which allows one-way (counter-clockwise) traffic to revolve around a central island. Entering traffic must yield to traffic already in the roundabout.



STRIPING, SIGNING AND PAVEMENT LEGENDS

The use of edge lines, centerlines, bike lanes and parking lanes are cost effective ways of narrowing the roadway lanes, resulting in drivers slowing down.