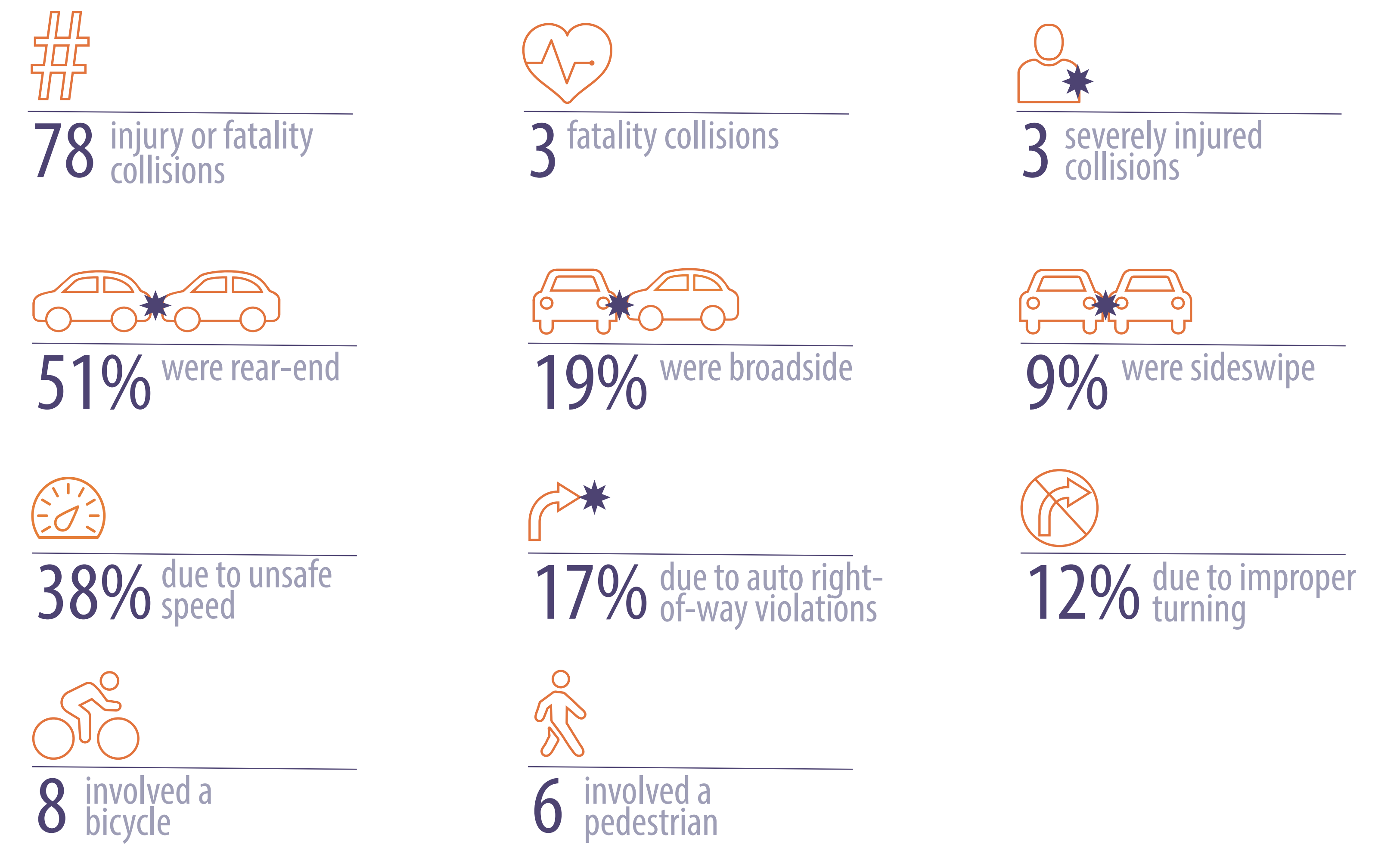


**Overview**

This data is for the years 2013-2017 from the Transportation Injury Mapping System (TIMS), managed by the Safe Transportation Research and Education Center (SafeTREC) at the University of California, Berkeley. Crash data include only those crashes that resulted in an injury or fatality and do not include crashes that resulted in property damage only.

Old Auburn Road provides direct access to two schools and numerous commercial centers. This access gives it the potential to generate a significant amount of foot and bicycle traffic. However, this 2-mile stretch of Old Auburn Road faces challenging transportation conditions including excessive speeds, inadequate bicycle, pedestrian and transit infrastructure, and a history of collisions. Addressing these needs will increase mobility to neighborhoods, schools, and various businesses and neighborhoods along this corridor.

**What do we know about these collisions?**



**Collison Density**

