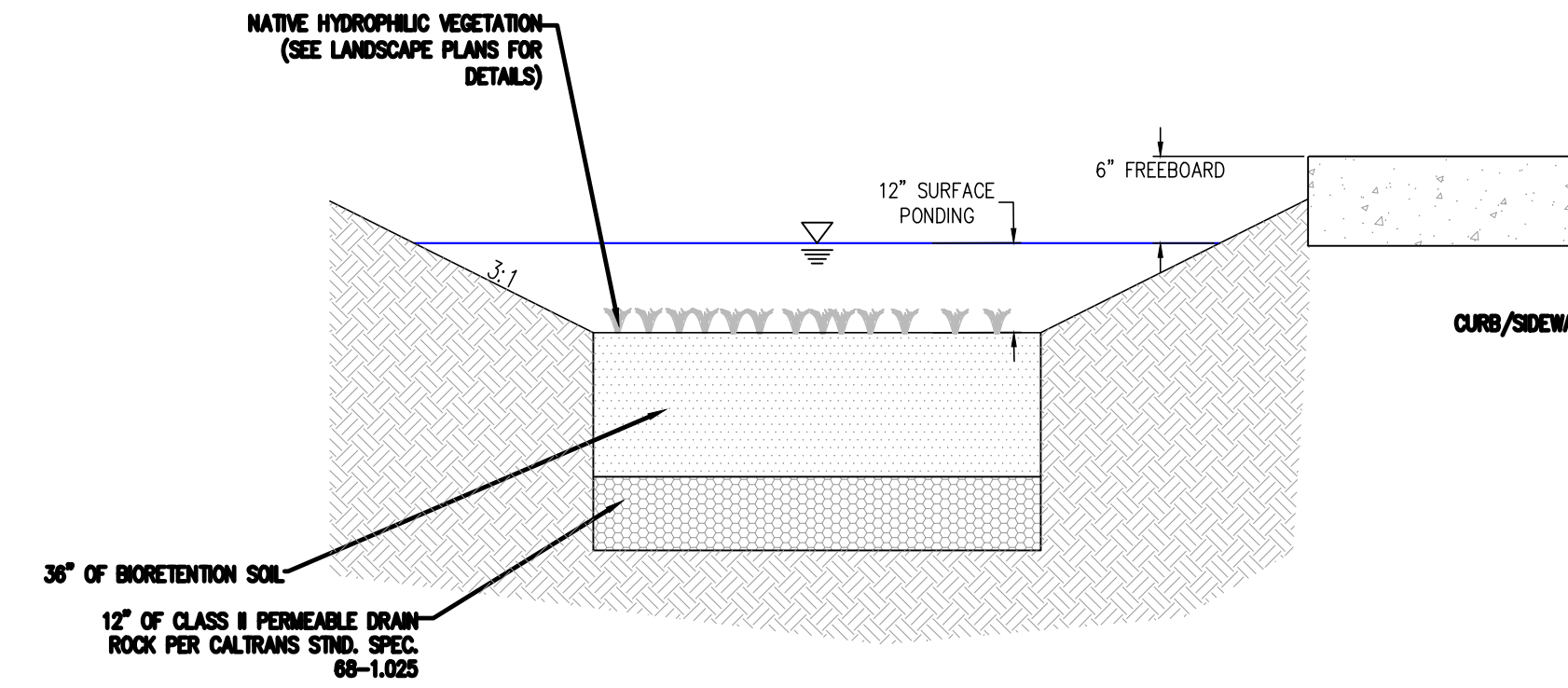
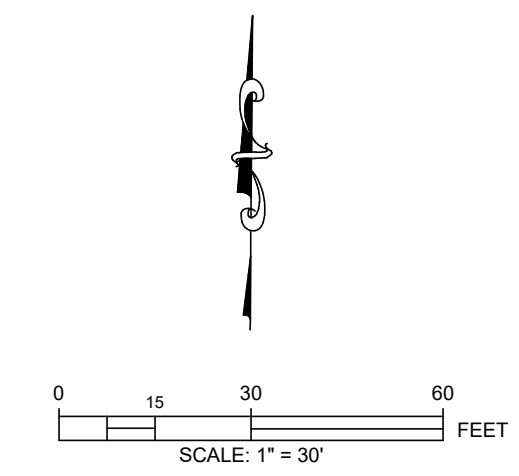


LEGEND	
	PROPOSED STORM DRAIN PIPE
	PROPOSED STORM DRAIN MANHOLE
	PROPOSED CATCH BASIN
	PROPOSED VELOCITY DISSIPATOR
	INFILTRATION TRENCH AREA
	PROPOSED BIORETENTION AREA
	PROPOSED CONCRETE SIDEWALK
	PROPOSED ASPHALT ROADWAY
2554.0TC	TOP OF CURB ELEVATION
2554.0FL	FLOWLINE ELEVATION
2554.0P	PAVEMENT ELEVATION
2554.0±	ELEVATION TO MATCH EXISTING GRADE
2554.5FF	FINISHED FLOOR ELEVATION



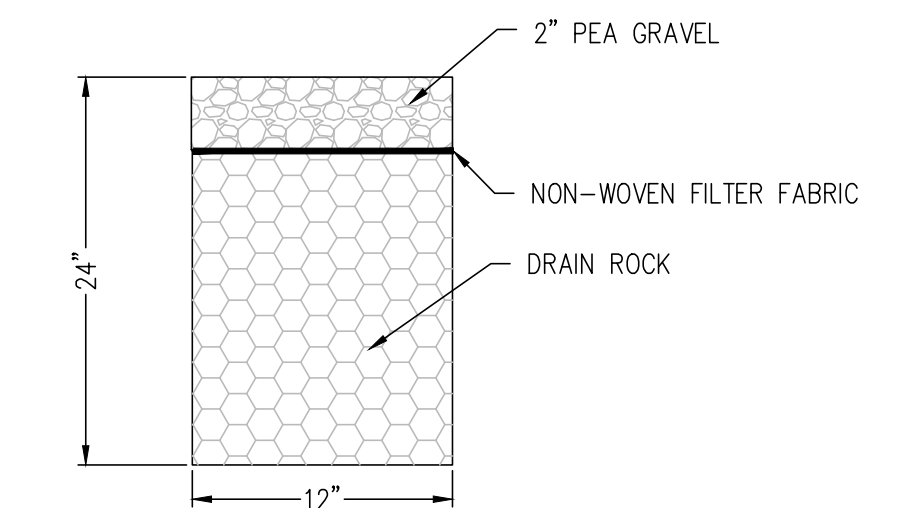
BIORETENTION TYPICAL SECTION

NOT TO SCALE



VOLUME CALCULATIONS

CUT: 4,785 C.Y.
FILL: 1,350 C.Y.
NET: 3,435 C.Y. CUT



INFILTRATION TRENCH

NOT TO SCALE



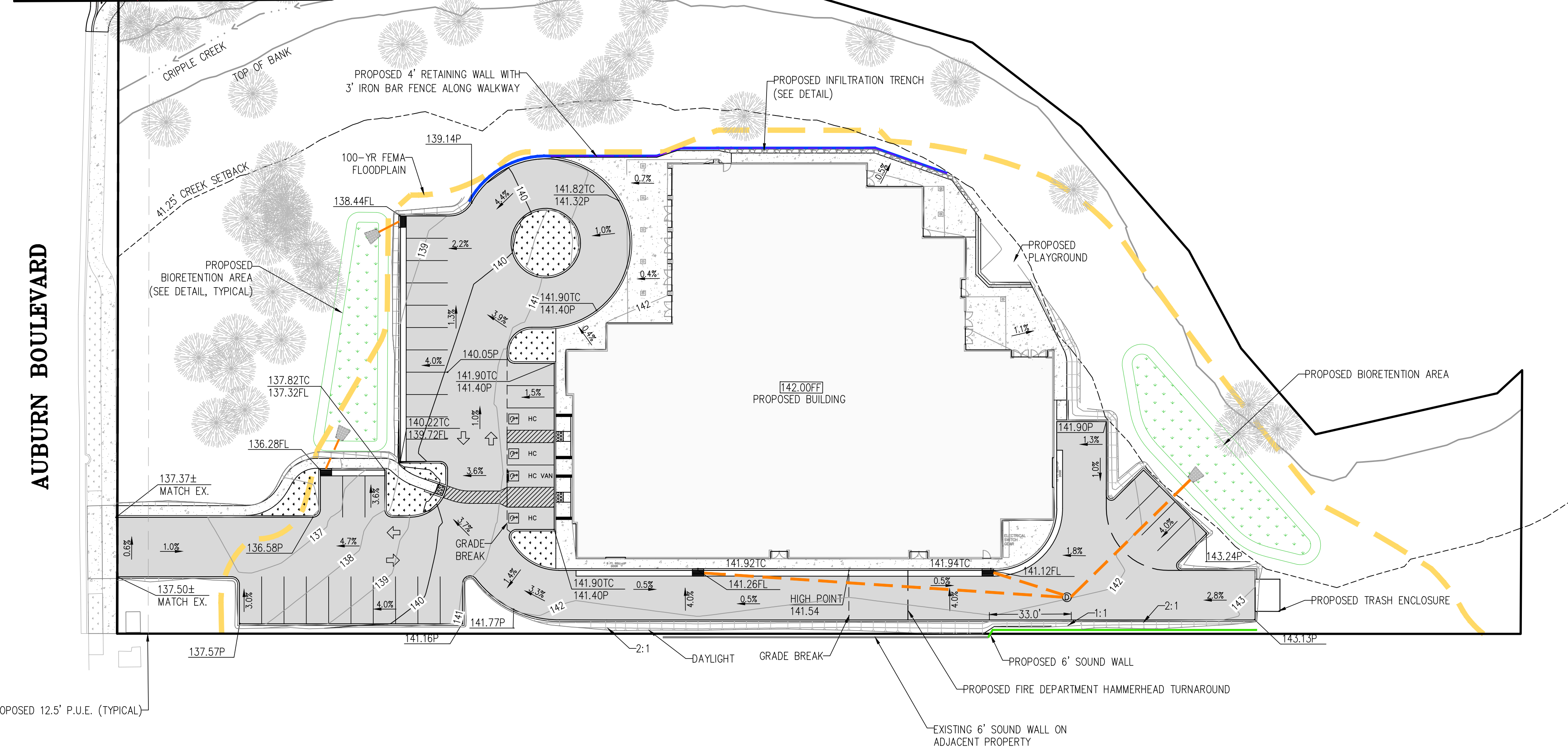
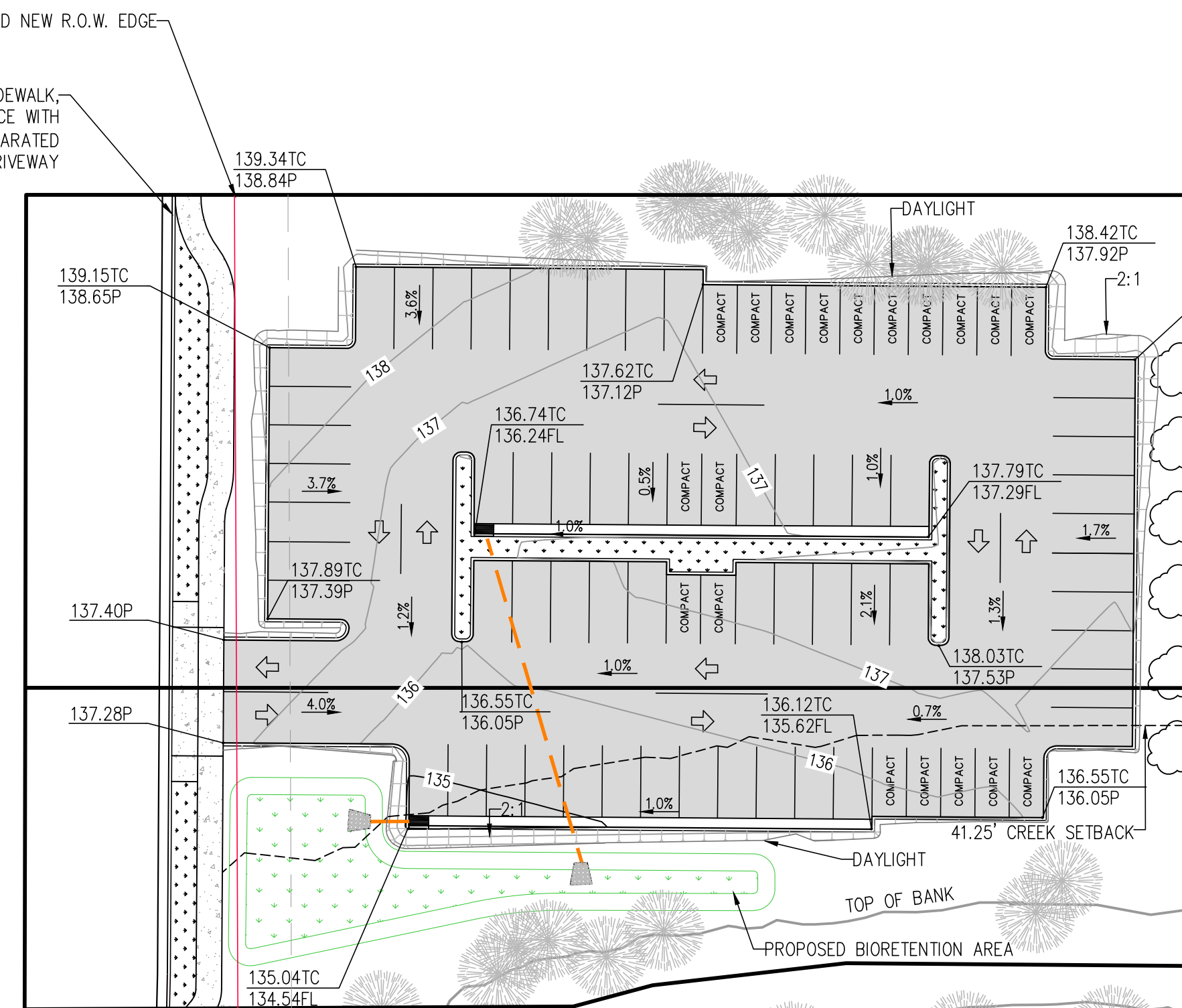
DATE SIGNED: _____

REV.	DESCRIPTION	DATE
DESIGNED: REW		
DRAWN: LAS		
PROJ. NO: 20-0704		
DWG. SEE DAYSTAMP		
DATE: MARCH, 2021		

SHEET NUMBER

C2.0

REMOVE EXISTING ROLLED CURB, GUTTER, SIDEWALK AND DRIVEWAY ALONG AUBURN BLVD & REPLACE WITH NEW VERTICAL CURB, GUTTER, 6' WIDE SEPARATED SIDEWALK AND TYPE A-6 COMMERCIAL DRIVEWAY



PROPOSED 12.5' P.U.E. (TYPICAL)

EXISTING 6' SOUND WALL ON ADJACENT PROPERTY