

LEGEND

- SANITARY SEWER
- STORM DRAIN
- WATER MAIN
- RIGHT-OF-WAY
- CENTER LINE
- BOUNDARY LINE
- LOT LINE
- OFFSITE P/L
- WALL
- FENCE
- JOINT POLE
- STREET LIGHT
- OAK TREES
- NON-OAK TREES

BOUNDARY NOTE:
BOUNDARY SHOWN ON THIS EXHIBIT IS SHOWN FROM ASSESSOR MAP INFORMATION AND AERIAL PHOTOGRAPHY. NO BOUNDARY SURVEY WAS PERFORMED AND THE PROPERTY LINES AND FENCES SHOWN ARE NOT TO BE TAKEN AS RECORD.

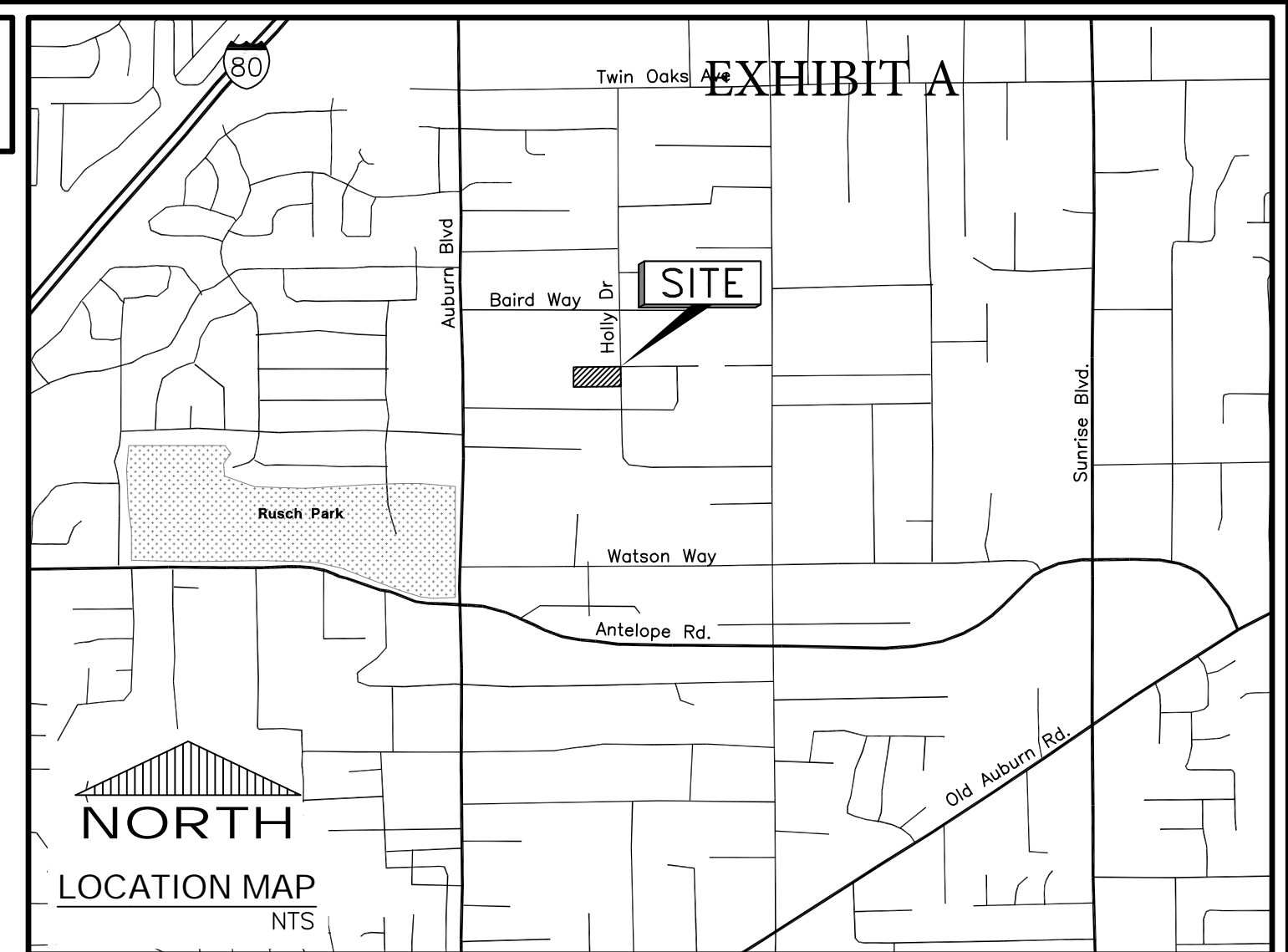
(REVISED)
TENTATIVE PARCEL MAP FOR:
HOLLY DRIVE

A.P.N.: 204-0530-004

CITY OF CITRUS HEIGHTS
JANUARY 2017

STATE OF CALIFORNIA
SCALE 1" = 20'

CNA ENGINEERING INC.
SHEET 1 OF 1

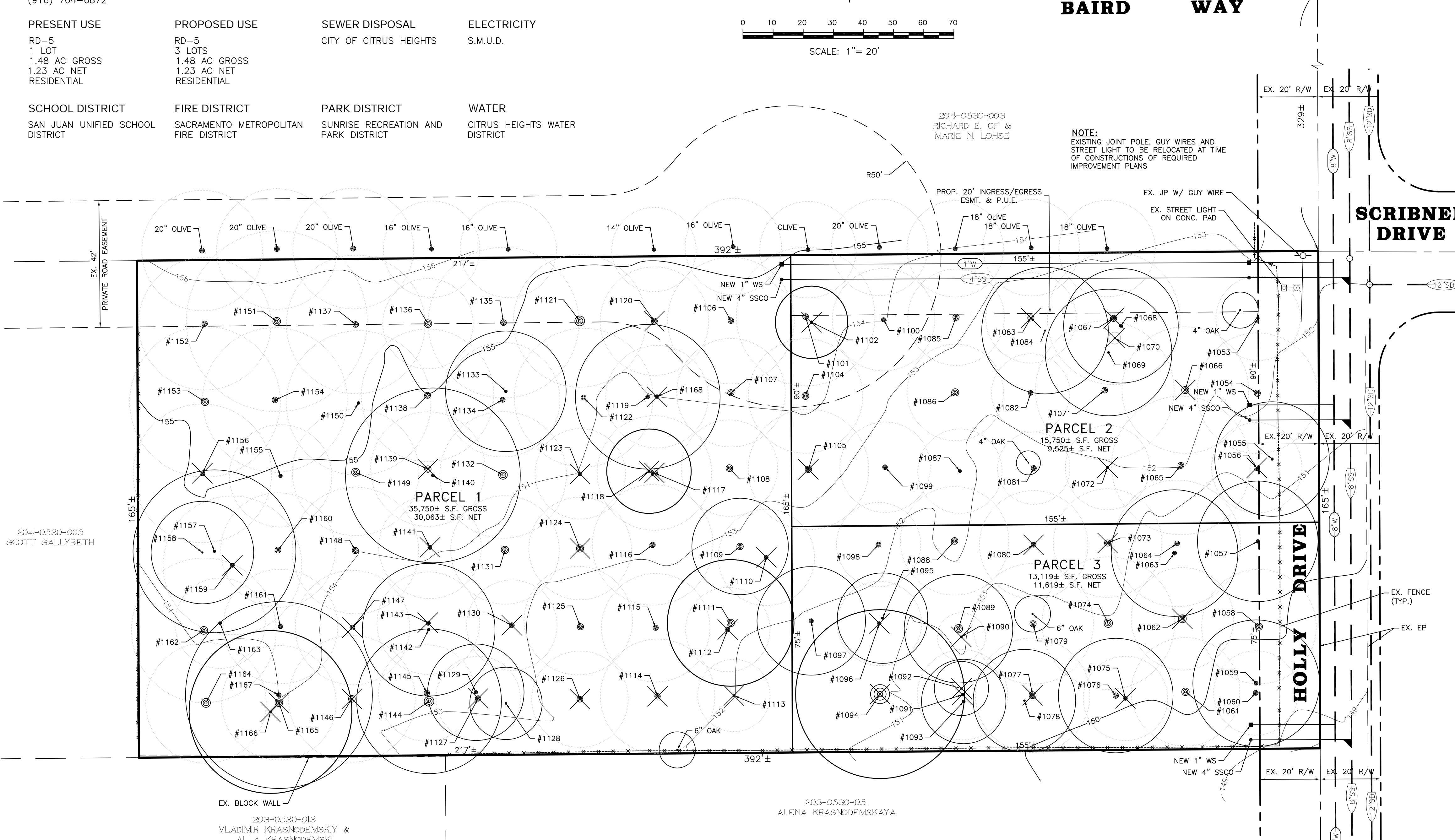


HOLLY DRIVE

OWNER VNS EXPRESS, INC. ATTN.: NADIYA SHUMIAK 801 MORTON WAY FOLSOM, CA 95630 (916) 704-6872	DEVELOPER/APPLICANT NADIYA SHUMIAK 801 MORTON WAY FOLSOM, CA 95630 (916) 704-6872	ENGINEER CNA ENGINEERING 2575 VALLEY ROAD SACRAMENTO, CA 95821 (916) 485-3746	PARCEL NO. 204-0530-004
--	--	--	-----------------------------------

PRESENT USE RD-5 1 LOT 1.48 AC GROSS RESIDENTIAL	PROPOSED USE RD-5 3 LOTS 1.48 AC GROSS RESIDENTIAL	SEWER DISPOSAL CITY OF CITRUS HEIGHTS	ELECTRICITY S.M.U.D.
SCHOOL DISTRICT SAN JUAN UNIFIED SCHOOL DISTRICT	FIRE DISTRICT SACRAMENTO METROPOLITAN FIRE DISTRICT	PARK DISTRICT SUNRISE RECREATION AND PARK DISTRICT	WATER CITRUS HEIGHTS WATER DISTRICT

TREE INVENTORY									
TREE NO.	COMMON NAME	TOTAL DBH*	DRIP-LINE**	PROPOSED	TREE NO.	COMMON NAME	TOTAL DBH*	DRIP-LINE**	PROPOSED
1053	OLIVE	10	14	-	1112	OLIVE	17	14	REMOVE
1054	OLIVE	25	20	-	1113	OLIVE	8	12	REMOVE
1055	INTERIOR LIVE OAK	10	19	-	1114	OLIVE	22	19	REMOVE
1056	VALLEY OAK	22	15	REMOVE	1115	OLIVE	21	18	-
1057	VALLEY OAK	14	20	-	1116	OLIVE	22	20	-
1058	OLIVE	29	19	-	1117	OLIVE	25	19	REMOVE
1059	BLUE OAK	15	21	-	1118	INTERIOR LIVE OAK	10	14	REMOVE
1060	OLIVE	20	14	-	1119	INTERIOR LIVE OAK	16	24	-
1061	OLIVE	30	18	-	1120	OLIVE	24	18	REMOVE
1062	OLIVE	32	17	REMOVE	1121	OLIVE	39	22	-
1063	VALLEY OAK	16	21	-	1122	OLIVE	20	23	-
1064	OLIVE	19	21	-	1123	OLIVE	15	15	REMOVE
1065	OLIVE	24	23	-	1124	OLIVE	29	17	REMOVE
1066	OLIVE	29	21	REMOVE	1125	OLIVE	25	18	-
1067	OLIVE	25	22	REMOVE	1126	OLIVE	23	16	-
1068	INTERIOR LIVE OAK	13	19	-	1127	OLIVE	22	14	REMOVE
1069	VALLEY OAK	8	21	-	1128	INTERIOR LIVE OAK	8	12	-
1070	VALLEY OAK	7	2	REMOVE	1129	INTERIOR LIVE OAK	14	16	-
1071	OLIVE	23	23	-	1130	OLIVE	20	15	REMOVE
1072	OLIVE	8	14	REMOVE	1131	OLIVE	30	18	-
1073	OLIVE	25	18	REMOVE	1132	OLIVE	35	21	-
1074	OLIVE	34	22	-	1133	INTERIOR LIVE OAK	11	20	-
1075	OLIVE	15	14	REMOVE	1134	OLIVE	20	19	-
1076	BLUE OAK	22	19	-	1135	OLIVE	23	25	-
1077	OLIVE	28	19	REMOVE	1136	OLIVE	31	15	-
1078	VALLEY OAK	6	17	-	1137	OLIVE	23	23	-
1079	OLIVE	25	20	-	1138	OLIVE	24	22	-
1080	OLIVE	19	18	REMOVE	1139	OLIVE	26	19	REMOVE
1081	OLIVE	21	12	-	1140	INTERIOR LIVE OAK	12	29	-
1082	OLIVE	19	13	-	1141	OLIVE	16	17	REMOVE
1083	OLIVE	25	15	REMOVE	1142	INTERIOR LIVE OAK	11	22	-
1084	BLUE OAK	6	21	-	1143	OLIVE	17	17	REMOVE
1085	OLIVE	25	16	-	1144	INTERIOR LIVE OAK	39	24	-
1086	OLIVE	29	16	-	1145	OLIVE	22	16	-
1087	OLIVE	12	14	-	1146	OLIVE	27	21	REMOVE
1088	OLIVE	27	18	-	1147	OLIVE	19	19	REMOVE
1089	INTERIOR LIVE OAK	33	18	-	1148	OLIVE	25	21	-
1090	OLIVE	9	8	REMOVE	1149	OLIVE	32	21	-
1091	OLIVE	10	15	REMOVE	1150	OLIVE	11	24	-
1092	VALLEY OAK	6	9	REMOVE	1151	OLIVE	31	30	-
1093	INTERIOR LIVE OAK	12	14	-	1152	OLIVE	22	22	-
1094	INTERIOR LIVE OAK	76	28	REMOVE	1153	OLIVE	30	25	-
1095	BLUE OAK	9	15	-	1154	OLIVE	23	24	-
1096	OLIVE	14	14	REMOVE	1155	OLIVE	14	17	-
1097	VALLEY OAK	17	18	-	1156	OLIVE	19	23	REMOVE
1098	OLIVE	20	14	-	1157	VALLEY OAK	10	27	-
1099	OLIVE	19	15	-	1158	INTERIOR LIVE OAK	6	17	-
1100	OLIVE	16	17	-	1159	OLIVE	16	23	REMOVE
1101	OLIVE	23	23	-	1160	OLIVE	24	19	-
1102	INTERIOR LIVE OAK	12	12	REMOVE	1161	OLIVE	17	19	-
1104	OLIVE	28	19	-	1162	OLIVE	31	24	-
1105	OLIVE	26	20	REMOVE	1163	INTERIOR LIVE OAK	12	15	-
1106	OLIVE	23	21	-	1164	OLIVE	36	20	-
1107	OLIVE	25	18	-	1165	OLIVE	31	19	REMOVE
1108	OLIVE	27	16	-	1166	INTERIOR LIVE OAK	8	27	REMOVE
1109	INTERIOR LIVE OAK	26	16	-	1167	INTERIOR LIVE OAK	18	31	-
1110	OLIVE	15	16	REMOVE	1168	OLIVE	16	17	REMOVE
1111	INTERIOR LIVE OAK	30	21	-					



BENCHMARK ELEV.: 140.426' (NAVD88), COUNTY OF SACRAMENTO B.M.: 9-39
2" BRASS DISC STAMPED "SACRAMENTO CO. DEPT. OF PUBLIC WORKS B.M. 9-39" LOCATED IN TOP OF WEST CONCRETE WALK 1.0' WEST OF EAST EDGE OF WALK 4' SOUTH OF NORTH END OF WALK 33' WEST OF CENTER OF PAVEMENT OF AUBURN BLVD. APPROX. NORTH OF WATSON WAY AT CONCRETE BRIDGE ACROSS CRIPPLE CREEK (NORTHWEST CORNER OF BRIDGE)

PROJECT SITE
SCALE: 1" = 20'

*DBH IS DIAMETER OF TRUNK MEASURED AT 4" FROM THE GROUND. DBH IS MEASURED IN INCHES.
**DRIPLINE RADIUS IS MEASURED FROM CENTER POINT OF TRUNK TO THE HORIZONTAL FARTHEST DRIPLINE OF THE CANOPY. DRIPLINE RADIUS ARE MEASURED IN FEET.
ARBORIST REPORT PREPARED BY LSA ASSOCIATES, INC.

CNA ENGINEERING INC.
CIVIL ENGINEERING: LAND SURVEYING
PLANNING: STRUCTURAL DESIGN

PREPARED BY: JEREL O.
DRAFTED BY: STEVE N.
DESIGNED BY: STEVE N.
CHECKED BY: CHRIS O.ASSESSOR'S PARCEL NO.: 204-0530-004

**TENTATIVE PARCEL MAP FOR:
HOLLY DRIVE
(REVISED)**

DATE: 1/20/2017
FN: 16112.DWG
SHEET 1 OF 1 SHEETS